

EPSON AcuLaser™
2600N



Weight = 37kg*2

ESC/P

*EPSON ESC/P2 stands for EPSON standard code for printers Level 2. This second generation printer control language supports scalable fonts as well as enhanced graphics capability. It also provides complete backwards compatibility with EPSON's ESC/P, the standard printer language for dot matrix printing.

EPSON is the registered trademark of SEIKO EPSON CORPORATION. EPSON ESC/P2 is a trademark of SEIKO EPSON CORPORATION. PostScript is a trademark of Adobe Systems Incorporated or its subsidiaries and may be registered in certain jurisdictions.

All other product names and other company names used herein are for identification purpose only and may be the trademarks or registered trademarks of their respective owners.

EPSON disclaims any and all rights in those marks. Specifications are subject to change without notice.

*1 Epson AcuLaser™ Resolution Improvement Technology
*2 Weight including consumables
*3 The above figures are approximate and are based on the number of A4 sheets printed under conditions of continuous printing at 5% coverage. Intermittent use may reduce page yield.
Initial Toner Cartridges: K: 5,000 pages, CMY: 2,000 pages
*4 48,000 pages in colour mode

Specifications

Key Features	Printing Technology	Laser	
	Engine Resolution	600 x 600 dpi	
	Resolution Enhancement	EPSON AcuLaser 2400 RIT*1	
	Print Speed	Up to 30ppm in Monochrome A4 7.5ppm in Colour A4	
	First Page Out	9.3sec in Monochrome 15.3sec in Colour	
Paper Handling	Processor	350MHz	
	Maximum Monthly Volume	120,000 pages*4	
	Standard Paper Input	650 sheets (150 Multi-Purpose Tray + 500-Sheet Paper Cassette)	
	Paper Size	A4, A5, B5, LT, GLT, HLT, EXE, C5, C6, Com-#10, DL, Monarch, ISO-B5; from 98 x 148mm to 216 x 297mm	
	Paper Weight	64 – 163 gsm	
Interfaces	Optional Paper Handling	500-Sheet Paper Cassette Automatic Duplex Unit	
	Standard Paper Output	250 Sheets Max.	
	IEEE 1284 Parallel Interface (Compatibility, Nibble and ECP Mode)		
	Hi-Speed USB (2.0 Compatible)		
	EPSONNet 10/100 Base Tx Ethernet Interface		
Memory	1 Slot for Type-B Interface Card		
	Standard/Maximum	64MB with EPSON MiTech up to 512MB max	
Power Requirements	Rated Voltage	AC 220V to 240V ±10%	
	Rated Frequency	50Hz/60Hz ± 3Hz	
	Rated Current	6A	
	Power Consumption	Operating:	900 W Max., 583 W (B&W), 332 W (Colour) Average
		Standby:	99W
Environmental Conditions	Sleep:	12W	
	Temperature	Operation: 10 to 35 °C / Storage: 0 to 35 °C	
	Humidity	Operation: 15 to 85% RH / Storage: 15 to 85% RH	
	Sound Power	Operating:	66dB
		Standby:	52dB
Sleep:	Background Noise (The measuring and calculation method conforms to ISO-7779 and ISO-9296, Employing Standard Values for RALUZ85 (BAM Standard))		
Printer Control Language Emulations	Standard	ESC/Page™ Colour, ESC/Page, PCL6 (Mono), ESC/P2™, FX, IBM Mode I239X, Adobe® PostScript® 3™	
	Optional	PCL5c	
	Options	Duplex Unit	C12C802221
		500-Sheet Paper Cassette	C12C802211
		Hard Disk Drive (40GB)	C12C824172
P5C Emulation Kit		C12C832641	
Consumables	High Capacity Toner Cartridge (Yellow)	C13S050226	
	Life*3 5,000 Pages		
	High Capacity Toner Cartridge (Magenta)	C13S050227	
	Life*3 5,000 Pages		
	High Capacity Toner Cartridge (Cyan)	C13S050228	
	Life*3 5,000 Pages		
	High Capacity Toner Cartridge (Black)	C13S050229	
	Life*3 5,000 Pages		
	Standard Capacity Toner Cartridge (Yellow)	C13S050230	
	Life*3 2,000 Pages		
	Standard Capacity Toner Cartridge (Magenta)	C13S050231	
	Life*3 2,000 Pages		
	Standard Capacity Toner Cartridge (Cyan)	C13S050232	
Life*3 2,000 Pages			
Waste Toner Collector	C13S050233		
Life*3 15,000 Pages in Colour/ 60,000 Pages in Monochrome			
Photoconductor Unit	C13S051107		
Life*3 10,000 Pages in Colour/ 40,000 Pages in Monochrome			
Fuser Unit	C13S053018		
Life*3 80,000 Pages			



Dealer's Stamp

EPSON
EXCEED YOUR VISION

For enquiries, contact your nearest EPSON sales representatives:

INDIA - (91) 80-305-15000, CALCUTTA - 287 1355/56,
CHENNAI - 820 3941/42, MUMBAI - 825 7286, NEW DELHI - 644 7201/2/3
INDONESIA - (62) 21-672-3161
MALAYSIA - (60) 3-562-88288
PHILIPPINES - (632) 813-6567
SINGAPORE - (65) 6586-5500
THAILAND / INDOCHINA - (662) 670-0680

Printed in September 05

www.epson.com.sg

EPSON
EXCEED YOUR VISION



MONO LASER PRINTER

EPSON AcuLaser™
2600N

**VERSATILITY TO
CONVERT TO COLOUR**

Epson welcomes you to the world of versatility and intelligent printing with the EPSON AcuLaser™ 2600N

MONO LASER PRINTER

EPSON AcuLaser™ 2600N

The monochrome EPSON AcuLaser™ 2600N is convertible into a full colour printer at your comfort.

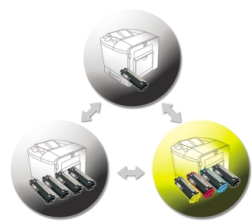


- Cost effective with colour printing option
- Superior print speed of 30ppm mono/7.5ppm colour (with colour cartridges)
- Superior print quality (2400dpi RIT)
- Fast first page out
- Standard network connectivity
- Standard Adobe® Postscript® 3™
- Memory upgradable to maximum of 512MB
- Versatile connectivity for any Windows / Mac network for Office Work Group
- Upgradable features
- Easy to use and maintain
- Option to add duplex unit

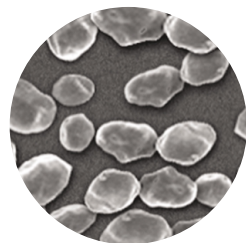
Efficiency



Easy Conversion to Full Colour



Uniform Toner Particles for Higher Image Quality



In the demands of a modern office and home, more often than not are printers required to multi-task between both monochrome and colour printing. The EPSON AcuLaser™ 2600N is the perfect print companion for users who are hesitant to upgrade to a colour-printing environment but would like to be able to do so, in the future, at an affordable cost. The monochrome EPSON AcuLaser™ 2600N is convertible into a full colour laser printer. The conversion is as simple and cost effective as changing the toner cartridges, making it the perfect print investment.

Empowered by Efficiency, Performance and Versatility

Efficiency

The EPSON AcuLaser™ 2600N boasts of an impressive print speed of 30ppm with a fast processing time for first page print. Epson's efficient printer driver ensures that complex and demanding jobs are processed quickly and smoothly to maximise throughput and efficiency in any environment.

Performance

Designed for maximum functionality, the EPSON AcuLaser™ 2600N allows the acceptance of up to 163gsm paper thickness to suit all your printing needs. The printer also features high paper and toner capacity to reduce user intervention manually by adding paper or changing toner. A print companion that grows with your printing needs, the EPSON AcuLaser™ 2600N has many upgradable features

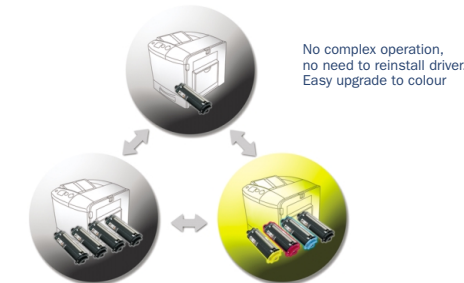
such as standard memory of 64MB, upgradable to 512MB; standard 650 sheets, upgradable to 1150 sheets; as well as the capability to convert into a full colour laser printer at your own comfort.

Versatility

The unique ability to convert from using full black toner cartridges to full colour cartridges and vice versa, the EPSON AcuLaser™ 2600N enables you to choose between 3 printing modes, namely: single black toner monochrome mode, 4 black toners monochrome mode and/or colour mode according to your operating needs. This comes with no compromise between high quality and monochrome speed.

Integration has never been friendlier

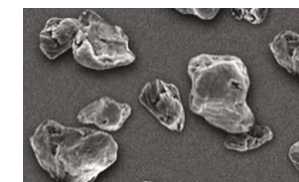
Equipped with standard network connectivity for easy installation into a network environment, the EPSON AcuLaser™ 2600N facilitates ease of use within an Office Work Group (department/shared environment). This intelligent printer also features a direct "Plug and Play" High speed USB (2.0), Standard Parallel and Ethernet connectivity for any Windows/Mac network for Office Work Group environment, as well as Standard Adobe® Postscript® 3™ for superior prints for print design usage.



High Quality Print with AcuBrite™ Toner

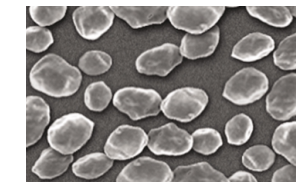
Uniform Image Quality

COMPETITOR'S TONER



Average particle size 8.0 micron
Particle shape Non-uniform

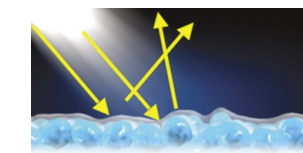
AcuBrite™ TONER



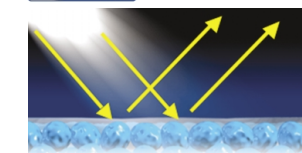
Average particle size 5.8 micron
Particle shape Uniform

Improved Colour Expression Performance

COMPETITOR'S TONER



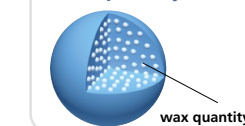
AcuBrite™ TONER



control the scattering of light

Micro-particles, having a low index of refraction, are added to the toner to control the scattering of light and expand the colour gamut.

Wax quantity ideal



wax quantity ideal

AcuBrite™ TONER

The uniform distribution of wax provides the optimum amount of wax required for fusion – as well as outstanding transparency for OHP presentations

The EPSON AcuLaser™ 2600N uses AcuBrite™ toner for more uniform toner particles and wax distribution to provide outstanding colour expression and uniform image quality. With high pigment colour expression and the right amount of gloss, AcuBrite™ toner is ideal for printing documents and business applications.

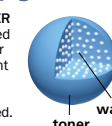
With the EPSON AcuLaser™ 2600N, printing is always at your fingertips. Choose to convert into a colour laser printer and explore the unbridled possibilities in the world of colour printing!

Uniform distribution of pigment and wax



toner wax

COMPETITOR'S TONER Since wax is disposed in the center of toner particles, the pigment and wax do not distribute uniformly when the toner is fused.



toner wax

AcuBrite™ TONER Since wax is distributed in fine particles within the toner particles, the pigment and wax are distributed with micro-order uniformity when the toner is fused.