

Enjoy The Freedom To Colour

- ✓ 96MB SDRAM
- ✓ Network-ready
- ✓ Superior 2400dpi (class) photo-like prints
- ✓ 16ppm mono, 4ppm colour
- ✓ Flexible connectivity

EPSON AcuLaser™ C1900

fills all your networked
colour laser printing needs

EPSON AcuLaser™ C1900

- 96MB SDRAM
- Network-ready
- Adobe PostScript 3 option
- Powerful print controller with 300Mhz processor
- User-friendly LCD panel
- Cost efficient alternative to mono laser printing
- Outstanding value, low operating costs
- Superior 2400 dpi (class) photo-like prints
- Print speeds - 16 ppm mono, 4 ppm colour
- Fast first page out 14 secs in mono, 25 secs in colour
- Easy to use and maintain
- Compatible with Windows ME/98/2000/XP, NT4 and Apple Mac OS 8.1 or later
- Flexible connectivity with USB, high speed parallel and 10/100Base TX Ethernet interface as standard
- Optional auto 2 sided printing (duplex) unit saves time and paper costs
- Compact footprint

With the new EPSON AcuLaser™ C1900 colour printing has never been this Affordable or Effective.

Add colour to your growing business. If you've always wanted the professional finish of colour laser printing, now's the perfect time. EPSON's latest networked colour laser printer is so well-designed, it actually costs less to run than most mid range monochrome laser printers. You'll get the full benefits of high quality colour laser printing that's fast, brilliant, efficient and ready for the demands of your network – at a surprisingly affordable price.

Brighter images, sharper text.

With EPSON, quality and efficiency go hand in hand. Thanks to exclusive AcuLaser technologies, you get more persuasive and professional-looking colour documents with superb 2400dpi (class) print quality. RITech or Resolution Improvement Technology boosts lines and texts to a stunning 2400dpi-class output, delivering professional colour results more efficiently at lower resolutions, with no compromise on quality. Not only that, AcuLaser Colour ASIC technology delivers photo-quality pictures and crisp, defined text, logos and graphics using sophisticated algorithms to process complex colour blends and halftones. In addition, a unique new MicroPolymer Toner ensures a wider range of colour reproduction with less graininess, more even toner coverage using smaller toner particles, hence minimising toner wastage.



AcuLaser color Halftoning OFF



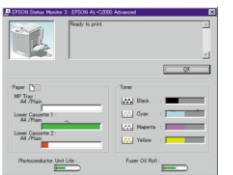
AcuLaser color Halftoning ON

Powerful processing and print speeds save you time

The EPSON AcuLaser C1900 is not only a hard worker, but fast. Expect print speeds of up to 16 ppm black and white, and 4 ppm colour; with fast first page out of just 14 seconds and 25 seconds respectively. EPSON's efficient printer driver ensures that complex and demanding jobs are processed quickly & smoothly to maximise throughput in any network environment.

Easy monitoring that puts you in charge

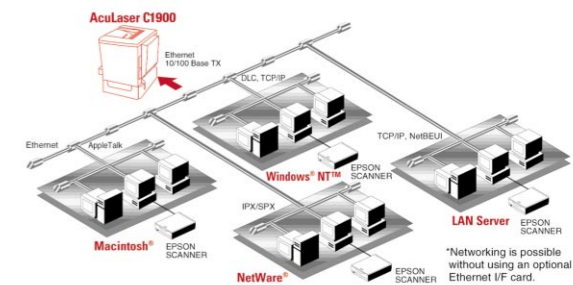
Whether you are in front of the printer, or at your desk, EPSON AcuLaser C1900 puts you fully in charge. Its LCD panel gives you job status feedback, user-friendly menus and direct configuring if you so prefer. At your desk, you won't find a more user-friendly interface that gives you live status information on print traffic, level of consumables, or whether the printer is out of paper. Track, manage and troubleshoot operations from the comfort of your workstation.



EPSON Status Monitor 3 Intuitive User Interface

Ideal in any environment

Designed for easy network integration and multi-system connectivity, the AcuLaser C1900 features a built-in 10/100Base network interface, USB and parallel ports. With one of the smallest footprints of any colour laser in the market, it is perfect for a wide range of applications and can be conveniently located in even the most crowded environment.



Easy maintenance, low running costs

All main consumables are easily accessible from the front of the printer and easy to replace, even a first-timer would have no problem. Toner cartridges are colour coded for easy identification, and replaceable separately to ensure low operating costs and no wastage. Optional extras include a duplex unit offering automatic 2 sided printing that saves paper costs, storage and distribution. The robust EPSON AcuLaser C1900 is made to last, saving you money not just in the short term, but for years to come.

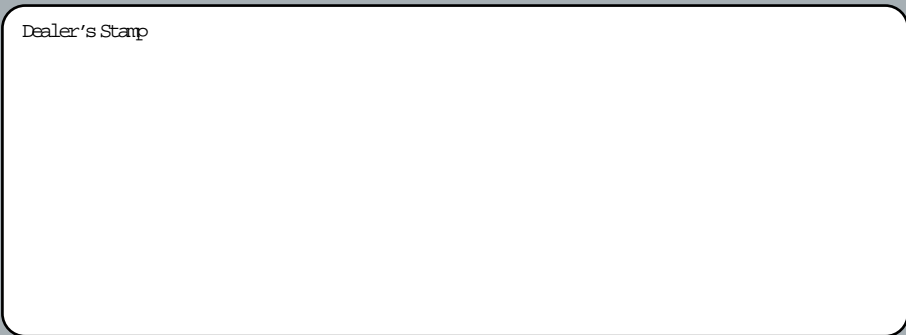


All consumables can be quickly and easily replaced from the front of the machine



EPSON AcuLaser™ C1900

4 ppm Network-ready Colour Laser Printer



SINGAPORE-(65) 6586 3111 MALAYSIA-(60) 03-562-88288 THAILAND/INDOCHINA-(662) 670 0680 INDONESIA-(62) 21-572 3161 PHILIPPINES-(632) 813-6567 INDIA-(91) 80-532 1266 (CALCUTTA-287 1355/56, CHENNAI-820 3940/41, MUMBAI-825 7286, NEW DELHI-644 7201/2/3)

SPECIFICATIONS

General

Printing Method	Laser
Engine Resolution	600 x 600dpi
Resolution Enhancement	EPSON AcuLaser Color 2400 RITech
Print Speed (Page per minute)	4ppm(A4) Colour, 16ppm(A4) Black & White
Processor	300 MHz
First page Out	Colour 25 seconds, mono 14sec
Warm up time	180 seconds

Dimensions (H x W x D)

Main Unit	406 x 429 x 521 mm
500 Sheet Cassette Unit	178 x 380 x 485 mm
Duplex Unit	330 x 96 x 340 mm

Weight

Main Unit	29.0Kg including consumables
500 Sheet Cassette Unit	5.3 Kg
Duplex Unit	2.0 Kg

Paper Handling

Standard Paper Input	Multipurpose Tray - A4, A5, B5, Letter, Half Letter, GLT, Executive, Monarch, C10, DL, C5, C6, IB5, Custom size (92 to 216mm x 210 to 297mm) - up to 200 sheets of EPSON Color Laser Paper, plain paper, and recycled paper - up to 10 envelopes - up to 50 sheets of labels, thick paper, EPSON Color Laser transparencies, and EPSON Color Laser Coated Paper - 60 to 163 g/m ² for plain paper, 91 to 163 g/m ² for Labels
Standard Paper Output	200 sheets face-down delivery
Optional Paper Handling	500 sheet paper cassette unit (C12C813911) - A4 - EPSON Color Laser Paper, plain paper, and recycled paper - 60-90 g/m ² Duplex Unit (C12C813921) - A4, Letter - EPSON Color Laser Paper, plain paper, and recycled paper - 60-90 g/m ²
Printable Area	Entire paper area except for a 4mm margin at each edge

Typefaces

ESC/Page: 84 Scalable Fonts + 7 Bitmap Fonts
PCL: 80 Scalable Fonts + 7 Bitmap Fonts
ESC/P2 : 10 Typefaces
FX : 8 Typefaces
IBM : 8 Typefaces
NLSP (National Language Support Programme) Supported as standard in the main unit font ROM

Interfaces

Standard on AcuLaser C1900	- IEEE 1284 bi-directional Parallel Interface with compatibility mode, nibble mode and ECP mode - EpsonNet 10/100baseTX Internal Print Server - Universal Serial Bus (USB) 1.1 compliant Note: only Macintosh systems equipped with a USB connector and running Mac OS 8.1 or later and Windows ME/98/2000/XP support USB interface - EPSON Type B Interface Slot (empty) - TCP/IP (LPR, FTP, IPP, PORT 9100) - Microsoft Network (SMB) - Novell NetWare (NDS Print Server, Bindery Print, Server, Remote Printer) - AppleTalk
Printing protocols	- TCP/IP (LPR, FTP, IPP, PORT 9100) - Microsoft Network (SMB) - Novell NetWare (NDS Print Server, Bindery Print, Server, Remote Printer) - AppleTalk
Management Protocols	- TCP/IP (SNMP, ENPC*, HTTP, TELNET, DHCP, BOOTP, PING) - Microsoft Network (APIPA, SSDP) - NetBEUI (SNMP, ENPC*) - NetWare (SNMP, ENPC*) - AppleTalk (SNMP, ENPC*)

Option

- IEEE 1394 Type B Interface card (C12C823723) to be connected on Macintosh with FireWire® port
- 500 Sheet Paper Cassette Unit (C12C813911)
- Duplex Unit (C12C813921)
- 6GB Hard Disk Drive (C12C823921)
- Adobe® PostScript® 3 kit (C12C832532)

Memory

Standard	96MB SDRAM
Maximum	1GB SDRAM
Memory expansion	2 Slots (The slots were already used by the standard 32 & 64MB SDRAM-no slot free) If users want to install the maximum amount of memory, the standard 96MB SDRAM must be removed and replaced by 2 x 512MB SDRAM
Memory type	Standard: EPSON recommends PC100 to PC133 compliance. 32, 64, 128, 256, 512MB memory

Printer Control Language Emulation

Standard	ESC/Page Color mode LJ4, GL2, ESC/P2, FX, I239X, ESC/Page (monochrome mode)
Optional Emulation	Adobe® PostScript® 3 (C12C832532)

Environmental Conditions (Operating)

Temperature	Operation: 10 to 35°C (50 to 95°F) Storage: 0 to 35°C (32 to 95°F)
Humidity	Operation: 15 to 85% RH Storage: 10 to 85% RH
Acoustic Noise Level	39dB(A) or less in Standby Mode, 54dB(A) or less while printing

Reliability and Durability

Max Monthly Volume	35,000 pages
Total Printer Life	5 years or 200,000 pages whichever comes first

Consumable Life** (A4 @ 5% Coverage)

Developer Toner Cartridges	Cyan C13S050099 Magenta C13S050098 Yellow C13S050097 Black C13S050100
	- 4,500 pages capacity toner cartridge - 1,500 pages capacity toner cartridge (included)
Photo Conductor Unit C13S051083	45,000 pages Black & White, 11,250 pages Colour
Waste Toner Collector C13S050101	25,000 pages Black & White, 6,250 pages Colour
Transfer Belt Unit C13S053009	210,000 pages Black & White, 52,500 pages Colour

Minimum [Recommended] System Requirements PC

CPU: Pentium 233 MHz
[Pentium II 450MHz or higher]
RAM: 64 MB [96MB]
HDD free space 500 MB
(for spooling the driver)
Interfaces :
- IEEE1284 ECP mode
- USB
- 10/100BaseTx Ethernet
Mac
CPU: PowerPC G3 233 MHz
[G3 500MHz or higher]
RAM: 128 MB
Interfaces:
- USB
- AppleTalk

Power Requirements 220V-240V

Rated Voltage	220V to 240V ±10%
Rated Frequency	50Hz to 60Hz ± 3Hz
Rated Current	Less than 7 A
Power Consumption (Operating)	Max: Less than 1100W 352Wh (Average at continuous printing in B/W) 251Wh (Average at continuous printing in Colour)
Power Consumption (Standby)	107Wh (average)
Power Consumption (Sleep mode)	Less than 12W



As an international ENERGY STAR Partner, EPSON has determined that this product meets the international ENERGY STAR

* EPSON Network Peripheral Control Protocol

** Those figures are approximate and are based on the number of sheets printed under conditions of continuous printing. Intermittent use may reduce page yield.



EPSON is a registered trademark of SEIKO EPSON Corporation. EPSON ESC/P2 is a trademark of SEIKO EPSON Corporation. Adobe and PostScript are trademarks of Adobe Systems Incorporated or its subsidiaries and may be registered in certain jurisdictions. All other product names and other company names used herein are for identification purposes only and may be the trademarks or registered trademarks of their respective owners. EPSON disclaims any and all rights to those marks. Specifications are subject to change without notice.

