

SPECIFICATIONS

Featuring the revolutionary DURABrite™ Ink, you get to enjoy absolute durability thanks to its water and light resistant properties. The patented technology behind this ink promises superb quality even on plain paper. That's where you save money! EPSON Stylus™ CX6500 uses independent ink cartridge system that ups the economy factor by enabling you to replace only the INKdividual™ cartridge that has run out.



Complementing our various state-of-the-art ink technologies are paper media that were rigorously tested for excellent print quality before addition to EPSON media range. Choose from our wide array of papers and be assured of prints that are both beautiful and long-lasting.



EPSON DURABrite™ Photo Paper

C13S041736
4R size (4x6in.),
30 sheets

A heavy-weight paper, EPSON DURABrite™ Photo Paper is designed to work best with DURABrite™ Ink to achieve superior photo quality and durability. No more worries when it comes to water spillage or gas contaminants damaging your treasured photos. Know that you can now do more, with DURABrite™ printing.

| | |
|------------------------------------|--|
| PRINTER | |
| PRINTER TYPE | On-demand ink jet (piezoelectric) |
| PRINTING METHOD | 180 nozzles (Black), 59 nozzles (Cyan), 59 nozzles (Magenta), 59 nozzles (Yellow) |
| NOZZLE CONFIGURATION | |
| PRINT QUALITY | |
| MAXIMUM RESOLUTION | 5760 optimised dpi with Variable-Sized Droplet Technology |
| MINIMUM INK DROPLET SIZE | 3 pl |
| PRINT SPEED | |
| BLACK TEXT (MEMO) A4 | Approx. 22.0cpm (Draft) *1 |
| COLOUR TEXT (MEMO) A4 | Approx. 11.0cpm (Draft) *2 |
| PHOTO 4R (4 x 6 in.) | Approx. 76 sec per photo (Photo) *3 |
| COPY FUNCTION | |
| COPY SPEED | |
| BLACK TEXT (MEMO) A4 | Approx. 16.0cpm (Draft) |
| COLOUR (DTP) A4 | Approx. 6.0cpm (Draft) |
| STANDALONE COPIER USABILITY | |
| NUMBER OF COPIES | 1 - 99 |
| REDUCTION / ENLARGEMENT | 25 - 400%, Auto Fit Function |
| COPY MODES | Standard Copy Mode, Small Margin Copy Mode, Repeat Copy Mode, 2-up Copy Mode, 4-up Copy Mode, BorderFree, Poster Copy |
| SCAN FUNCTION | |
| SCAN TECHNOLOGY | |
| SCANNER TYPE | A4, Flatbed colour image scanner |
| CCD DETAILS | Colour CIS line sensor |
| SCAN QUALITY | |
| OPTICAL RESOLUTION | 1200 X 2400dpi |
| SCANNING SPEED | Input 16 bits/pixel/colour, Output 8 bits/pixel/colour |
| MONOCHROME (B-level) | A4 600dpi 5 mSec/line A4 1200dpi 10 mSec/line |
| COLOUR | A4 600dpi 15 mSec/line A4 1200dpi 30 mSec/line |
| CARD SLOT FUNCTION | |
| BUILT-IN SLOT | 5 slots: CF Type II/Smart Media/Memory Stick, Memory Stick PRO/SD/MMCxD-Picture Card |
| SUPPORTED MEMORY CARDS | CompactFlash/Smart Media/MagicGate Memory Stick/Memory Stick PRO/Memory Stick Duo/MicroDrive/SD, Mini SD Card/MMCxD-Picture Card |
| FILE FORMAT | Jpeg (Exif ver 2.2) - DCF version 1.0, TIFF |
| OTHER SPECIFICATIONS | |
| PAPER HANDLING | |
| PAPER FEED METHOD | Friction Feed |
| PAPER HOLD CAPACITY | Input capacity: 120 sheets |
| PAPER SIZE | A4, A5, A6, B5, Letter, Legal, Half Letter, Executive |
| | Envelopes: No.10, DL, C6, 132 X 220mm |
| | Less than 0.52mm |
| PRINT MARGIN | |
| SUPPORTED OS | Win 98/ME/2000/XP, Mac OS 9.1; Mac OS 10.2 or later with USB |
| DRIVERS | |
| INTERFACE | USB 2.0 High Speed* |
| INK CARTRIDGE | |
| BLACK INK CARTRIDGE (T0461) | 540 pages comparable with 3.5% ECMA (ISO10561) at 360dpi |
| CYAN INK CARTRIDGE (T0472) | 250 pages, 5% in calculation |
| MAGENTA INK CARTRIDGE (T0473) | 250 pages, 5% in calculation |
| YELLOW INK CARTRIDGE (T0474) | 250 pages, 5% in calculation |
| GENERAL | |
| RATED VOLTAGE | AC 220 - 240V |
| NOISE LEVEL | 45db(A) (ISO 7779) |
| INPUT BUFFER | 64KB |
| POWER CONSUMPTION | Approx. 14W (Standalone copying, ISO10561 Letter Pattern, Plain Paper - Normal), Approx. 6.0W (Sleep Mode) |

| EPSON SPECIALTY MEDIA | | |
|---|-----------------|------------|
| The following media is suitable for pigment based DURABrite™ ink. | | |
| MEDIA TYPE | MEDIA SIZE | ORDER CODE |
| GENERAL USE | | |
| PHOTO QUALITY INK JET PAPER | A4 | C13S041061 |
| PREMIUM INK JET PLAIN PAPER | A4 | C13S041214 |
| CRAFTS | | |
| PHOTO QUALITY INK JET CARD | A6 | C13S041054 |
| PHOTO QUALITY INK JET CARD | 5 X 8" | C13S041121 |
| IRON-ON COOL PEEL TRANSFER PAPER | A4 | C13S041154 |
| PHOTO OUTPUT | | |
| DURABRITE PHOTO PAPER | 4 X 6 in. (4R) | C13S041736 |
| DURABRITE PHOTO PAPER | A4 | C13S041733 |
| PREMIUM SEMI-GLOSS PHOTO PAPER | 4 X 6 in. (4R) | C13S041750 |
| PREMIUM SEMI-GLOSS PHOTO PAPER | A4 | C13S041332 |
| PHOTO PAPER | 10 X 15 cm (4R) | C13S041255 |
| PHOTO PAPER | A4 | C13S041140 |
| ARCHIVAL MATTE PAPER | A4 | C13S041342 |
| MATTE PAPER-HEAVYWEIGHT | A4 | C13S041259 |
| DOUBLE-SIDED MATTE PAPER | A4 | C13S041569 |
| PRESENTATION | | |
| INK JET TRANSPARENCIES | A4 | C13S041063 |

EPSON

Dealer's Stamp

May 04

For enquiries, contact your nearest EPSON sales representatives:
INDIA - (91) 802-532-1266-70, CALCUTTA - 287 1355/56, CHENNAI - 820 3941/42, MUMBAI - 825 7286, NEW DELHI - 644 7201/2/3
INDONESIA - (62) 21-572-3161 MALAYSIA - (60) 3-562-88288 PHILIPPINES - (632) 813-6567
SINGAPORE - (65) 6337-7911, (65) 6586-3111 THAILAND / INDOCHINA - (662) 670-0680

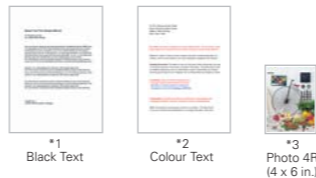


EPSON Stylus™ CX6500
Weight=Approx. 9.0kg

*To use the USB port, your PC must conform to PC98 specifications, and have Windows® preinstalled. Consult the documentation provided with your PC for further information about USB connectivity. Note also that printing errors may occur if non-standard cables or more than two hub connections are used.

Print Speed Data Printout Patterns

The thumbnail images below show the printout patterns used to determine print speed specifications.



Print Speed Note:
The print times shown in this brochure are the average time for multiple prints of the same page over one time or time to print one photo. Times are measured from 'Print' command to delivery of the page in the tray. The speeds were achieved using the following system: 1GHz Pentium III, 128MB RAM, Windows XP, USB 1.1 interface. Print times will vary depending on computer configuration, settings application, coverage and page complexity.

- 80 years on Epson Matte type media
- Under fluorescent (indoor display condition) with glass mount.
- For use with EPSON Matte Paper - Heavy Weight.
- The data is calculated by EPSON's accelerated test and it does not mean EPSON guaranteed periods.
- The estimated longevity does not indicate the colour changing and the durability of the paper itself
- Lightfastness rating may vary depending on papers
- This lightfastness test is a simulation of colour fading in an indoor preservation conditions that you display your prints. Factors, other than light, such as ozone, temperature and humidity can affect the print life.

Lightfastness Test Criteria (Indoor Display Condition)

Light source : Fluorescent light
Intensity : 70,000 lux
Temperature : 24°C
Humidity : 60%RH
Glass mount : 2mm, soda lime
Fade criteria : Pure YMC 30% loss at OD=1
Display-life : Total illuminance /500 lux x 10 hours
Calculation x 365 days=1 year

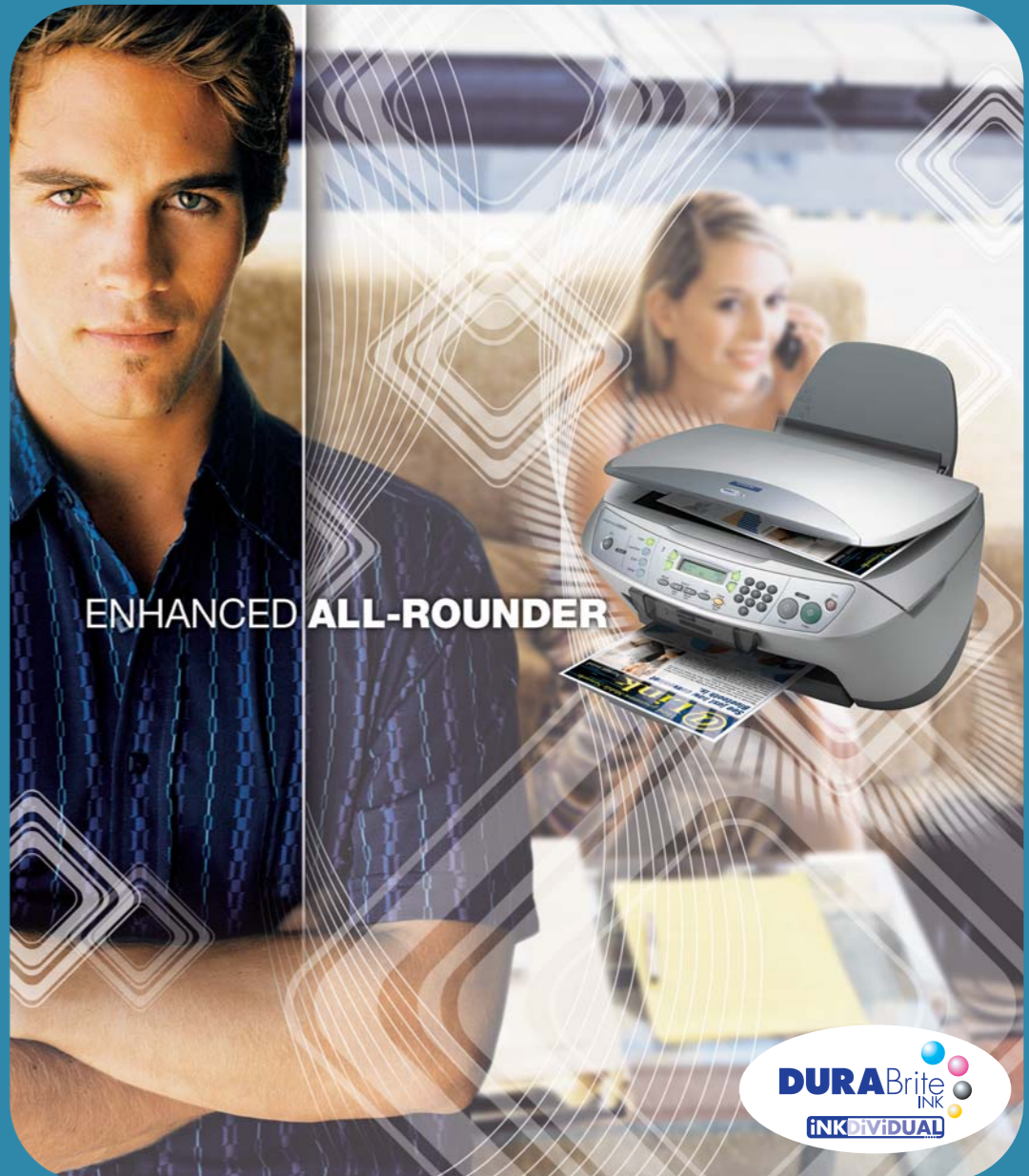
*Test developed and conducted by EPSON.

EPSON is the registered trademark of SEIKO EPSON CORPORATION.
All other product names and other company names used herein are for identification purpose only and may be the trademarks or registered trademarks of their respective owners.
EPSON disclaims any and all rights in those marks.
Scan/Print samples shown herein are simulations.
Specifications are subject to change without notice.

www.epson.com.sg
www.epsonphoto.com.sg

SCANNER PRINTER COPIER EPSON STYLUS™ CX6500

EPSON



ENHANCED ALL-ROUNDER



SCANNER PRINTER COPIER

EPSON STYLUS™ CX6500



ENHANCED ALL-ROUNDER

Boundless possibilities exist with EPSON Stylus™ CX6500, your superb all-in-one solution. High speed printing and copying enhances productivity wherever you are. EPSON DURABrite™ Ink promises stunning printouts on plain paper, producing photo-quality prints at an affordable cost.

Effective and Efficient Printer

DURABrite™ Ink for Enhanced Vividness and Higher Productivity

Print breath-taking photos and ultra-crisp black text on plain paper with DURABrite™ ink. For higher productivity, print all photographs on plain paper before publishing a select few on DURABrite™ Photo Paper for true BorderFree™ for 4R (4x6in.) and A4 size. Being pigment-based, the ink produces water-resistant and fade-resistant printouts that can last up to 80 years*

* EPSON Matte Paper Heavyweight

Breath Taking Photo Prints on Plain Paper

Photo quality prints are now possible on plain paper with a resolution of up to **5760x1440 optimised dpi** at 3pl droplet.



Efficiency from High Speed Printing

Higher productivity at office or home, with an amazing printing speed of **22ppm for black text** documents and **11ppm for colour**.

Cost Effectiveness

Black Ink Save Mode provides a back-up alternative when black ink runs low. In addition, **INKindividual™ cartridges** promote cost-savings in ink usage as only the depleted individual cartridge needs to be replaced.

Convenient Full-Featured PC-Less Copier

High-Speed Copying

Enhance efficiency with a dazzling 16 copies of black text documents in just one minute.

Wide Range of Copying Options

Reproduce documents and photos in Small Margins Mode of 1.5mm. Copying in enlarged or reduced sizes is easy with built-in AutoFit and Reduction/Enlargement functions, and save paper with up to 4-in-1 page and Repeat Copy functions. It is truly a versatile copier with precise zoom copy.

***Virtually no warm up time required**

High Precision Scanner

Perfect Scans

Digital reproductions of photos and documents are accurately scanned to an optical resolution of up to **1200 x 2400 dpi**. The scanned image with 48 bit depth stores more tonal colour information for better results.



Intuitive LCD Control Panel



4-up copy: 4 original A4 copied into a single sheet

Color Restoration

Archiving old photographs? Revitalise tired photographs with the one-click **Color Restoration** function to restore faded shots to their former brilliance.



***Win & Mac compatible, it even comes with USB2.0 Hi-speed interface for fast scanning.**



Versatile Photo Direct Card Slots

Direct Printing from Memory Cards

Print high quality PRINT Image Matching (P.I.M.) photo directly with the native slots.



PC Card Reader/Writer Function

EPSON Stylus™ CX6500 serves as a memory card reader/writer too for 7 types of memory cards. Scan images can also be saved directly onto memory cards.



Photo Index Sheet Print

Use the Index Sheet to make selections for desired prints – just Print, Shade and Scan!



EPSON Print, Shade and Scan Index Form

- Choose Photo
- Choose Paper Type
- Scan and Print

Advanced Software Suite

One-stop Multifunctional Manager

EPSON Smart Panel ver 3.2 is a one-stop control centre for all your needs including fax* and OCR. It supports functions such as the new Scan to Multi-page PDF functions.

*3rd party software required

Centre of Creativity

Print Image Framer ver 2.1 and PIF Designer ver 2.1 add creativity to photographs. Insert, customise or even create frames to make photographs more interesting. Disney frames are now bundled for added fun in your printing experience. For more photo resources, visit www.epsonphoto.com.sg.

© Disney
© Disney Based on the "Winnie the Pooh" works, by A.A. Milne and E.H. Shepherd



Photo Printing Utility

Easily print BorderFree™ photos and index prints, or enhance mobile phone images with EPSON PhotoQuicker ver 3.5.

NEW EPSON Web to Print

EPSON Web-to-page (Win) program optimises page set-up so that most web pages are printed to conform to the required paper size. Preview and print an intended page with the EPSON Web-to-page toolbar.



Other Bundled Software

- Arcsoft PhotoImpression
- ABBYY FineReader OCR Software

The EPSON Stylus™ CX6500 provides a superior centralised platform to achieve high productivity and effectiveness. It is the all-star multi-functional solution for your office.



Facts on Genuine Inks

Superior Image Quality

For prints as vivid as your memories. EPSON inks are designed to work specifically with your printer hardware, and to deliver stable, long-lasting, photographic quality – quality that cannot be matched by third party inks.

Longer Print Life

For brilliant prints that last and last. Permanence, or how long a print will last before noticeable fading when it's on display and exposed to light, is where third party inks really pale in comparison to EPSON's inks. In a recent study, Henry Wilhelm, a leading authority on photo longevity, projected EPSON inks to last for up to 92 years* when used with EPSON paper.

EPSON STYLUS™ C82 INK TEST - PRINT LIFE

| INK BRANDS | DISPLAY PERMANENCE (number of years) |
|--------------|---|
| G&G | (0.5) |
| OA100 | (0.5) |
| RAINBOW LOGO | (1) |
| EPSON | (92) |

PC World Magazine 9/03, test conducted using EPSON STYLUS™ C82 with EPSON DURABrite™ Ink on EPSON Matte Paper Heavyweight

Greater Reliability

Because we value your time as much as you do. All ink jet printers provide print-head nozzle cleaning cycles to ensure reliable ink flow. Ink is used in these cleaning cycles. According to a study conducted by Torrey Pines Research, third party inks require up to 25 times more user-initiated cleaning cycles than EPSON ink cartridges.†

EPSON STYLUS™ COLOR 777 INK TEST - NOZZLE CLEANING CYCLES PER 1000 PAGES

| | |
|---------|------|
| EPSON | 1.8 |
| BRAND E | 44.9 |
| BRAND F | 45.7 |

†Torrey Pines Research, test of EPSON genuine ink vs. third party inks.

Unbeatable Value

More prints per cartridge. Torrey Pines Research stated that EPSON inks "consistently outperformed third party ink brands" when it comes to the number of prints per cartridge. In fact, the study showed that EPSON inks produces up to 114 more pages per black ink cartridge and 19 more pages per colour cartridge.‡ EPSON ink prints up to 30% more than third party ink.

EPSON STYLUS™ C62 INK TEST - PAGE YIELD PER CARTRIDGE

| | | |
|-----------|-----|------------|
| EPSON | 494 | 237 |
| BRAND A | 380 | 218 |
| BLACK INK | | COLOUR INK |

‡Torrey Pines Research, test of EPSON genuine ink vs. third party ink

The Final Facts

The research proves not only that: "you get what you pay for", but with genuine EPSON inks, you get substantially more. For more on the advantages of using genuine EPSON inks versus third party inks, go to www.epson.com/genuineink.