

Multimedia Projector
EMP-7900

EPSON

The Picture-perfect Projector



The Picture-perfect Projector

Projecting crystal-clear images at an astounding 4000 lm, this projector is surprisingly light and compact—and intelligent. Not only will you get there quicker, but you won't lose a step with its quick and easy setup. And remarkable versatility allows you to take command in virtually any room environment.

So if your presentation is a work of art in the making, let this intelligent projector apply the finishing touches. Epson's new EMP-7900 projector—the picture-perfect solution.

Multimedia Projector

EMP-7900

4000 lm Real XGA



Powerful & attractive

4000 lm / 250 W UHE lamp / 5.6 kg

Powerful enough to project bright and clear images in a large meeting room, yet light enough to carry from room to room. 4000 lm made compact and portable.

700:1 high contrast ratio

Projects sharp and vivid images in a high contrast ratio.

Optional lenses

Two optional lenses allow you to use the projector in virtually any room situation. (The standard short focus lens is included with the projector.)

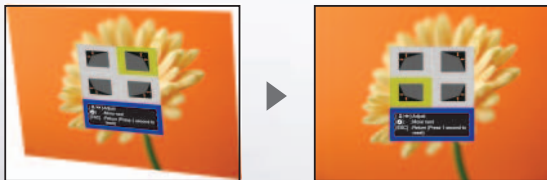


Diagonal Screen Size (inches)	ELPLM03 Middle Throw Zoom Lens Part No.: V12H004M03		ELPLL05 Long Throw Zoom Lens Part No.: V12H004L05	
	Wide (cm)	Tele (cm)	Wide (cm)	Tele (cm)
30	104	141	138	187
40	140	190	187	253
60	213	288	285	384
80	286	385	383	516
100	359	483	481	647
150	542	727	726	975
200	724	971	971	1304
300	1089	1459	1461	1960

Easy Setup, Versatile Adaptability

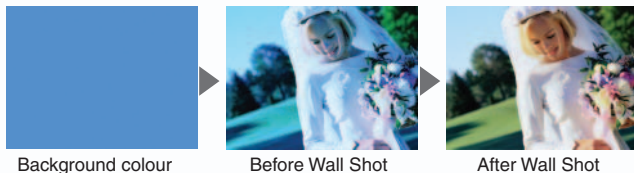
Quick Corner

Another Epson innovation—this time making it much easier to keep your screen even straighter. Quick Corner not only makes straightening all four sides of the screen simple, but finer tuning capabilities allow for accuracy never before attainable. Adjustments of up to $\pm 40^\circ$ vertical and $\pm 20^\circ$ horizontal allow for more freedom when choosing a place for the projector.



Wall Shot

No need to set up a white screen. This new Epson feature makes automatic adjustments for accurate image colours on any colour wall.



Five selectable projection modes

Simple image-quality settings that allow you to optimally adjust colours for any type of image in any situation.

Dynamic, Presentation, Theatre, Living Room, sRGB

Brightness control

Adjust to match your viewing environment. Help keep the glare and the fan noise to a minimum with the low setting; use the high setting in low-light situations.

High Brightness: 4000 lm

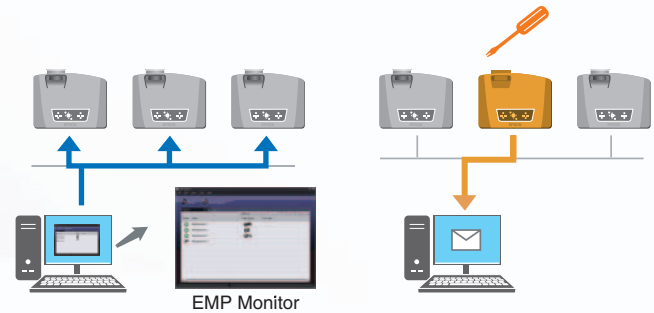
Low Brightness: 3000 lm

Vertical auto keystone correction

Just place the projector on a table and turn it on—no settings, no buttons. The projector automatically makes adjustments to keep your images straight and your mind at ease.

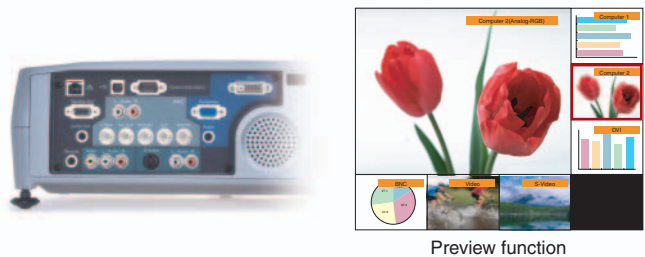
Network functionality

Use the included EMP Monitor software through a LAN connection to monitor and control multiple EMP-7900s simultaneously. If something requires attention, an e-mail alert is sent automatically.



Broad input connectivity and preview function

Compatible with virtually any imaging equipment. And the preview function makes it easier than ever to keep track of the connected equipment and select an input source.



Automatic RGB/Component video signal recognition

EMP-7900 automatically distinguishes between any computer or component video signals inserted into the computer input terminals and duplicate images beautifully.



Specifications

Model	EMP-7900
Part Number	V11H170052
Projection System	Epson original 3LCD prism technology
Projection Method	Front / rear / ceiling mount
LCD	
Size	1.0" with MLA
Driving Method	Epson Poly-Silicon TFT LCD Active Matrix
Pixel Number	786,432 (1024 x 768) pixels x 3
Native Resolution	XGA
Aspect Ratio	4:3
Pixel Arrangement	Stripe
Projection Lens	
Type	Manual : Zoom / Focus
F-number	1.7 - 2.3
Focal Length	28 - 37mm
Zoom Ratio	1:1.35
Lamp	
Type	UHE 250W
Life (Typical)	2000 hours (High Brightness Mode) / 3000 hours (Low Brightness Mode)
Screen Size (Projected Distance)	30" to 300" diagonal (0.8 to 11m)
Keystone Correction	Vertical: +/- 40° / Horizontal: +/- 20°
Brightness (Typical)	4000 ANSI Lumens (High Brightness Mode) / 3000 ANSI Lumens (Low Brightness Mode)
Contrast Ratio (Typical)	700:1
Brightness Uniformity (Typical)	90%
Color Reproduction	Full Color (16.7 million colors)
Speaker	5W Monoaural
Effective Scanning Frequency Range	
Pixel Clock	Analog: 13.5 to 230 MHz / Digital: 25 to 135MHz
Horizontal	Analog: 15 to 107 KHz / Digital: 15 to 80MHz
Vertical	Analog: 50 to 120 Hz / Digital: 50 to 85MHz
Analog RGB Input / Output	
Display Performance	
Native	XGA (1024 x 768)
Resize	Up to UXGA (1600x1200)
Input Terminal	
Video	Mini D-Sub 15pin x 1, 5-BNC x 1
Audio	Mini D-Sub 15pin: Stereo Mini Jack x 1, 5-BNC: RCA (L/R) x 1
Output Terminal	
Video	Mini D-Sub 15pin x 1
Audio	Stereo Mini Jack x 1
Digital RGB Input / Output	
Display Performance	
Native	XGA (1024 x 768)
Resize	Up to SXGA (1280x1024)
Input Terminal	
Video	DVI-D x 1
Audio	Stereo Mini Jack x 1
Video Input / Output	
Display Performance	560 TV Line
Input Signal	NTSC, NTSC4.43, PAL, M-PAL, N-PAL, PAL60, SECAM SDTV / HDTV: 480i (525i), 480p (525p), 720p(750p), 1080i (1125i)
Input Terminal	
Video	BNC x 1 (Component Video / Video RGB), S-Video x 1, RCA x 1
Audio	RCA (L/R) x 3
Control Input / Output	
USB I/O	USB Type B x 1
Serial	Mini D-Sub 9pin x 1 (RS-232C)
Remote Control	Stereo Mini Jack x 1
Network	RJ45 x 1
Operating Temperature	5°C to 40°C (41°F to 104°F)
Power Supply Voltage	100-240V +/- 10%, 50/60Hz AC
Maximum Dimension	419(W) x 325(D) x 138(H) mm
Weight	5.6 kg / 12.3 lbs
Fan Noise	33 dB (Low Brightness Mode)
Accessories	Power cord, Mini D-Sub 15-pin VGA cable, mouse cable (USB Type A-USB Type B), remote control (battery included), Epson projector software CD-ROM, user's manual CD-ROM, quick reference guide

Projection Distance

Diagonal Screen Size (Inches)	Wide (cm)	Tele (cm)
30	77	107
40	105	144
60	161	219
80	216	293
100	272	368
150	411	554
200	550	740
300	827	1113

Connector Panel



Options & Accessories

ELPLP22 Replacement Lamp
Part No.: V13H010L22

ELPAF01 Air Filter Set
Part No.: V13H134A01

ELPKS28 Soft Travel Case
Part No.: V12H001K28

ELPKS29 Hard Travel Case
Part No.: V12H001K29

ELPKC28 Remote Control Set (20 Metres)
Part No.: V12H005C28

INDIA

Epson India Pvt Ltd
Tel: (91) 080-2532-1266 Fax: (91) 080-2558-1799
www.epson.co.in

INDONESIA

PT Epson Indonesia
Tel: (62) 021-572-3161 Fax: (62) 021-572-4357
www.epson.co.id

MALAYSIA

Epson Trading (M) Sdn Bhd
Tel: (60) 03-5628-8288 Fax: (60) 03-5628-8388
www.epson.com.my

PHILIPPINES

Epson Philippines Corporation
Tel: (63) 02-813-6567 Fax: (63) 02-811-1163
www.epson.com.ph

SINGAPORE

Epson Singapore Pte Ltd
Tel: (65) 6337-7911 Fax: (65) 6334-2716
www.epson.com.sg

THAILAND/INDO-CHINA

Epson (Thailand) Co., Ltd
Tel: (66) 02-670-0680 Fax: (66) 02-670-0688
www.epson.co.th

Dealer's Stamp: