



**EMP-S1**

MULTIMEDIA PROJECTOR



**EPSON**



Stylish. Simple. Smart.



**SMART**



**SIMPLE**



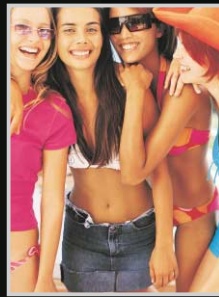
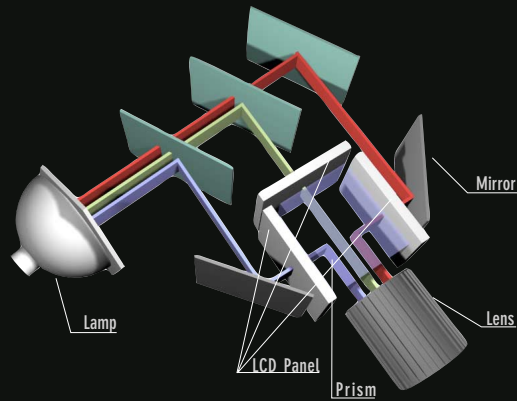
**STYLISH**



Epson introduces the EMP-S1, the sleek new LCD projector that's easy on the eyes, and effortless in its functionality. Its futuristic look complements what's on the inside; cutting edge projector technology that Epson is known for. With its user friendly controls, quick power and shut down feature to its versatility to project in any environment, the EMP-S1 is a comprehensive tool for the demands of today.

Don't miss out and experience the EMP-S1 for yourself: the true marvel of projector technology!





Epson 3-LCD Projector



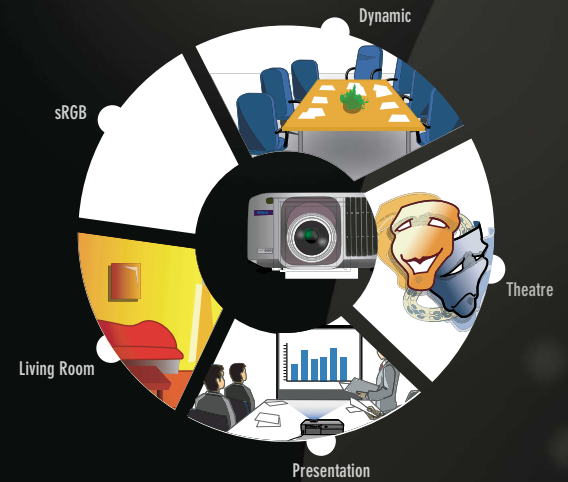
Other Single-Chip Projector

## 3-LCD HIGH-QUALITY PROJECTION SYSTEM

With Epson's high-performance poly-silicon LCD panels, the EMP-S1 is equipped with the state-of-the-art 3-LCD projection system where separate LCD panels are dedicated for each primary colour-red, green and blue-thus giving the projector the capability to reproduce natural and vivid colours.

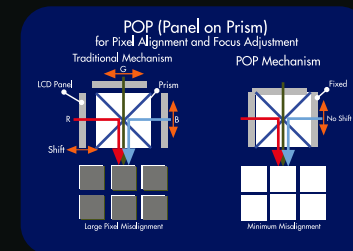
## ONE-TOUCH COLOUR SETTING

To make the EMP-S1 even easier to use, a push of the "Color Mode" button on the remote control interchanges between five preset projection modes that are user selectable based on the projection environment. Now you no longer need to meddle with multiple adjustments just to get the best image!



## PANEL-ON-PRISM (POP)

Epson's POP technology ensures that the EMP-S1 always produces crystal clear images for a long time. Unlike traditional mechanisms, which has a high risk of pixel misalignment after years of use, the EMP-S1 never encounter such problems as the LCD panels are fixed directly onto the prism, thus eliminating any potential panel movement.



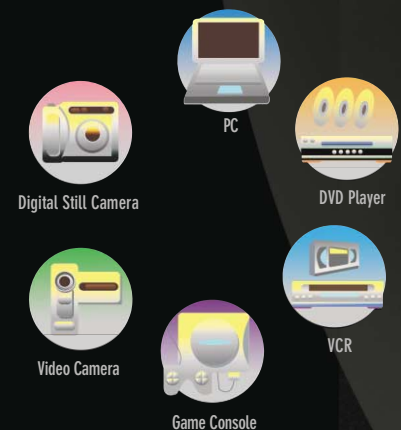
Traditional Mechanism Pixel Misalignment



Panel-On-Prism Consistent Pixel

## MULTIMEDIA APPLICATION

The EMP-S1 supports a variety of NTSC, PAL or SECAM video sources, including composite video, component video, S-video and a series of SDTV/ HDTV signals. That's not all, the EMP-S1 can also support analog RGB signals (up to XGA resolution) for PC inputs. Now, you have the luxury to connect virtually any video and entertainment equipment into one single projector for all your leisure needs!



HOME THEATRE

PRESENTATION

SPORT

MULTIMEDIA PROJECTOR

EMP-S1

EDUCATION

EPSON SINGAPORE

- Stylus C82 Inkjet Printer
- Perfection 1660 Photo Scanner
- Perfection 2490 Photo Scanner
- EMP-735 Projector

What's New!  
New range of EPSON products.

EPSON eWarranty  
Register your products on-line now and start enjoying 3\* additional months of warranty!

Check Repair Status  
Easy and convenient way of checking your machine's repair status.

- About Us
- Products
- Support
- Warranty
- Dealership
- Where to Buy
- Contact Us
- News Centre
- eBusiness
- EPSON Square
- Success Stories

INTERNET

SCORE 00886875

5TH GAMES

GAME OVER







## REMARKABLY COMPACT AND QUIET

Size does matter when you're looking for a projector that will fit anywhere in your home or office. With its sleek and compact engineering, it is also portable and comes with a built-in handle and soft carry case to add to the EMP-S1's allure. The EMP-S1 can be easily integrated into a vast range of office environments and can even be placed between meeting rooms. Say goodbye to noisy projectors, as the EMP-S1 is amazingly quiet at 33dB! Say hello to the sound of silence.



## CARD-SIZED REMOTE CONTROL

Perfect Control At Your Fingertips. The EMP-S1 comes equipped with a revolutionary engineered remote control that's not only small and sleek, but its user-friendly interface allows you to operate the EMP-S1 with ease. Stored in a cleverly placed holder built within the EMP-S1, it adds convenience to your projector.



## IT'S ALL ABOUT SPEED AND EFFICIENCY

While most projectors take more than a minute to start up and cool down, the EMP-S1 takes approximately 5 seconds to start up and an incredible 20 seconds to shut down. Start your presentations with a flourish and end them with spending more time with the important things: your audience. Never be bogged down in your next presentation again!

## PRESENTATION REMOTE CONTROL KIT

With the EMP-S1, comes the presentation remote control kit that's not only easy to use, but also adds to the EMP-S1 experience. With effortless USB connectivity to the PC that does not require any driver downloads, you are virtually in control from start to finish. For simple navigation, the remote control also features an 'Page Up' and 'Page Down' button that directs your presentation the way you want to present it. The most eye-catching thing to this kit is that it comes FREE with your purchase; a deal that is both functional and practical!

## DIGITAL KEYSTONE CORRECTION

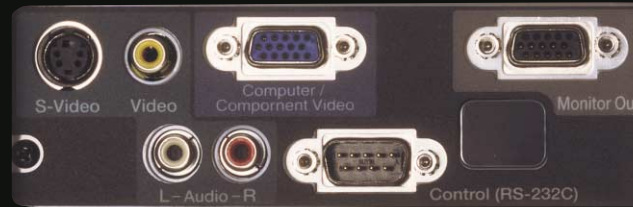
The EMP-S1 is equipped with an advanced vertical keystone correction feature that eliminates the trapezoidal image distortion when tilting the projector upwards or downwards at an acute angle. No matter how you set up the projector, you are always guaranteed a perfect image for your utmost viewing pleasure!



## Specifications

Model	EMP-S1
Part Number	V11H128052
Projection System	Epson Original LCD Prism Technology
Projection Method	Front / Rear / Ceiling mount
LCD	
Size	0.5"
Driving Method	Epson Poly-Silicon TFT LCD Active Matrix
Pixel Number	480,000 (800 x 600) pixels x 3
Native Resolution	SVGA
Aspect Ratio	4:3
Pixel Arrangement	Stripe
Projection Lens	
Type	Manual Focus
F-number	1.4
Focal Length	16.6mm
Zoom Ratio (Digital)	1:1.2
Lamp	
Type	UHE 132W
Life (Typical)	2000 Hours
Screen Size (Projected Distance)	30" to 300" diagonal (0.9 to 11.3m)
Keystone Correction	Vertical: +/- 15°
Brightness (Typical)	1200 ANSI Lumens
Contrast Ratio (Typical)	400:1
Brightness Uniformity (Typical)	85%
Color Reproduction	Full Color (16.7 million colors)
Speaker	1W Monoaural
Effective Scanning Frequency Range	
Pixel Clock	13.5 to 165 MHz
Horizontal	15 to 92 KHz
Vertical	50 to 85 Hz
Analog RGB I/O	
Display Performance	
Native	SVGA (800 x 600)
Resize	Up to XGA (1024 x 768)
Input Terminal	
Video	Mini D-sub 15pin x 1
Audio	RCA (L/R) x 1 (Shared)
Output Terminal	
Video	Mini D-sub 15pin x 1
Video I/O	
Display Performance	550 TV Line
Input Signal	NTSC, NTSC4.43, PAL, M-PAL, N-PAL, PAL60, SECAM
Input Terminal	SDTV / HDTV: 480i (525i), 480p (525p), 720p(750p), 1080i (1125i)
Component Video / Video RGB	Mini D-sub 15pin x 1 (Shared)
S-Video	Mini DIN x 1
Composite Video	RCA x 1
Audio	RCA (L/R) x 1 (Shared)
Control I/O	
Serial	Mini D-sub 9pin x 1 (RS-232C)
Operating Temperature	5°C to 35°C (41°F to 95°F)
Power Supply Voltage	200-240V +/- 10%, 50/60Hz AC
Maximum Dimension	370(W) x 265(D) x 114mm(H)
Weight	3.2 kg / 7 lbs
Fan Noise	33 dB
Accessories	Power cord, Mini D-sub 15-pin VGA cable, remote control (battery included), presentation remote control kit, lens cover, air filter, user's manual CD, quick reference guide, soft carry bag

## Connector Panel



## Options & Accessories



ELPLP25 Replacement Lamp  
Part No.: V13H010L25



ELPSC06 50" Portable Screen  
Part No.: V12H002S06



ELPSC07 60" Portable Screen  
Part No.: V12H002S07

ELPKC27 VGA-to-Component  
Video Conversion Cable  
Part No.: V12H005C27

ELPAF03 Air Filter Set  
Part No.: V13H134A03

ELPSC08 80" Portable Screen  
Part No.: V12H002S08

## Projection Distance

Diagonal Screen Size (Inches)	Wide(cm)	Tele (cm)
30	87	108
40	117	145
60	177	219
80	237	293
100	297	367
150	446	553
200	596	738
300	895	1109

All products and brand names herein are for identification purpose only and may be the trademarks or registered trademarks of their respective owners. Epson disclaims any and all rights in those marks. All images are simulated in this brochure. Specifications are subject to change without notice.

Printed on May 2003



Pixelworks ICs are used in this projector.

INDIA  
Epson India Pvt.Ltd.  
Tel: (91) 080-532-1266 Fax: (91) 080-558-1799  
www.epson.co.in

INDONESIA  
PT Epson Indonesia  
Tel: (62) 021-572-3161 Fax: (62) 021-572-4357  
www.epson.co.id

MALAYSIA  
Epson Trading (M) Sdn.Bhd  
Tel: (60) 03-5628-8288 Fax: (60) 03-5628-8388  
www.epson.com.my

PHILIPPINES  
Epson Philippines Corporation  
Tel: (63) 02-813-6567 Fax: (63) 02-811-1163  
www.epson.com.ph

SINGAPORE  
Epson Singapore Pte Ltd  
Tel: (65) 6472-2822 Fax: (65) 6472-4291  
www.epson.com.sg

THAILAND/INDO-CHINA  
Epson (Thailand) Co., Ltd  
Tel: (66) 02-670-0680 Fax: (66) 02-670-0688  
www.epson.co.th

Dealer's Stamp:

# EPSON