

9-PIN
DOT MATRIX PRINTER
LX-300+



SPECIFICATIONS

PRINTER TYPE	
PRINTING METHOD	Impact dot matrix
NUMBER OF PINS IN HEAD	9 pins
PRINT DIRECTION	Bi-directional with logic seeking
PRINT SPEED	
HIGH SPEED DRAFT 12 CPI	337 cps
HIGH SPEED DRAFT 10 CPI	300 cps
DRAFT 15 CPI	225 cps
DRAFT 12 CPI	270 cps
DRAFT 10 CPI	225 cps
DRAFT 20 CPI CONDENSED	225 cps
DRAFT 17 CPI CONDENSED	191 cps
NLQ 15 CPI	56 cps
NLQ 12 CPI	67 cps
NLQ 10 CPI	56 cps
PRINT CHARACTERISTICS	
CHARACTER SETS	13 international character sets 13 character code tables (Standard) Italic, PC437, PC850, PC860, PC861, PC863, PC865, Abicomp, BRASCII, Roman 8, ISO Latin 1, PC858, ISO 8859-15
BITMAP FONTS	EPSON Draft: 10, 12, 15 cpi EPSON Roman: 10, 12, 15 cpi, Proportional EPSON Sans Serif: 10, 12, 15 cpi, Proportional
BAR CODE FONT	EAN-13, EAN-8, Interleaved 2 of 5, UPC-A UPC-E, Code 39, Code 128, PostNet
PRINTABLE COLUMNS	
PITCH (CPI)	Characters per line
10 CPI	80
12 CPI	96
15 CPI	120
17 CPI CONDENSED	137
20 CPI CONDENSED	160
PAPER HANDLING	
PAPER PATH	Manual Insertion: Rear in, Top out Push Tractor: Rear in, Top out Pull Tractor: Rear in, Top out Bottom in, Top out
CUT SHEET SIZE	Cut Sheet Feeder: Rear in, Top out Width: 100~257mm (3.9~10.1") Length: Max. 364mm (14.3")
ENVELOPES	No.6, No.10
CONTINUOUS PAPER SIZE	Width: 101.6~254mm (4.0~10.0") Length: Max. 558.8mm (22.0")
ROLL PAPER SIZE	Width: 216mm
PAPER THICKNESS	Cut Sheet: Single sheet 0.065~0.14mm (0.0025~0.0055") Multi-part forms 0.12~0.39mm (0.0047~0.015") Envelopes: 0.16~0.52mm (0.0063~0.0205") Continuous Paper: Single sheet/Multi-part forms 0.065~0.39mm (0.0025~0.015") Continuous forms with label: Base Sheet 0.07~0.09mm (0.0028~0.0035") Total Sheet 0.16~0.19mm (0.0063~0.0075") Roll Paper 0.07~0.09mm (0.0028~0.0035")
PAPER FEEDING	Friction Feed: Rear Insertion Push Tractor Feed: Rear Insertion Push-Pull Tractor Feed: Rear Insertion Pull Tractor Feed: Rear/Bottom Insertion
COPIES	Original + 4 Copies
LINE SPACING	1/6 inch or programmable by 1/216 inch

INPUT DATA BUFFER	8 K Byte
INTERFACE	
STANDARD	Centronics®-type 8-bit parallel interface (IEEE-1284 Nibble mode)
OPTION	EpsonNet 10/100 Base Tx Ext. Print Server
RIBBON CARTRIDGE	
COLOUR	Black
TYPE	Fabric ribbon cartridge
RIBBON LIFE	Black Ribbon: Approx. 3 million characters (Draft 10 cpi, 14 dots/character) Colour Ribbon: Approx. 1 million characters (Black) Approx. 0.7 million characters (Magenta) Approx. 0.7 million characters (Cyan) Approx. 0.5 million characters (Yellow)
ACOUSTIC NOISE	Approx. 49 dB (A) (ISO 7779 pattern)
RELIABILITY	
MTBF (Mean Time Between Failure)	6000 POH (25% duty cycle)
PRINT HEAD LIFE	Approx. 400 million strokes/wire
CONTROL PANEL	4 switches, 4 LEDs
ENVIRONMENTAL CONDITIONS (OPERATING)	
TEMPERATURE	5~35°C
HUMIDITY	10~80% RH
ELECTRICAL SPECIFICATIONS	
RATED VOLTAGE	AC 120V or AC 220~240V
RATED FREQUENCY	50~60Hz
POWER CONSUMPTION	Approx. 23W (ISO 10561 Letter pattern) Energy Star compliant
DIMENSIONS	
WIDTH x DEPTH x HEIGHT	366 x 275 x 159mm
WEIGHT	Approx. 4.4 kg
PRINTER DRIVER/UTILITY	
OS	Microsoft® Windows® operating system Version 3.1 Microsoft® Windows® 95/98 and Microsoft® Windows NT® operating system Version 3.51/4.0 Microsoft® Windows® 2000 EPSON Remote! (MS-DOS environment only) EPSON Status Monitor 3 (Windows® 95/98/2000, Windows® NT 4.0 environment only)
UTILITY	
OPTIONS	
RIBBON CARTRIDGE (BLACK)	#8750
RIBBON PACK (BLACK)	#8758
RIBBON CARTRIDGE (COLOUR)	S015073
SINGLE-BIN CUT SHEET FEEDER	C806372
PULL TRACTOR UNIT	C800302
COLOUR UPGRADE KIT	C832082
ROLL PAPER HOLDER	#8310
EpsonNet 10/100 Base TX Ext. Print Server	C82378*

*Regional AC Adapter Set (C82525) is required.

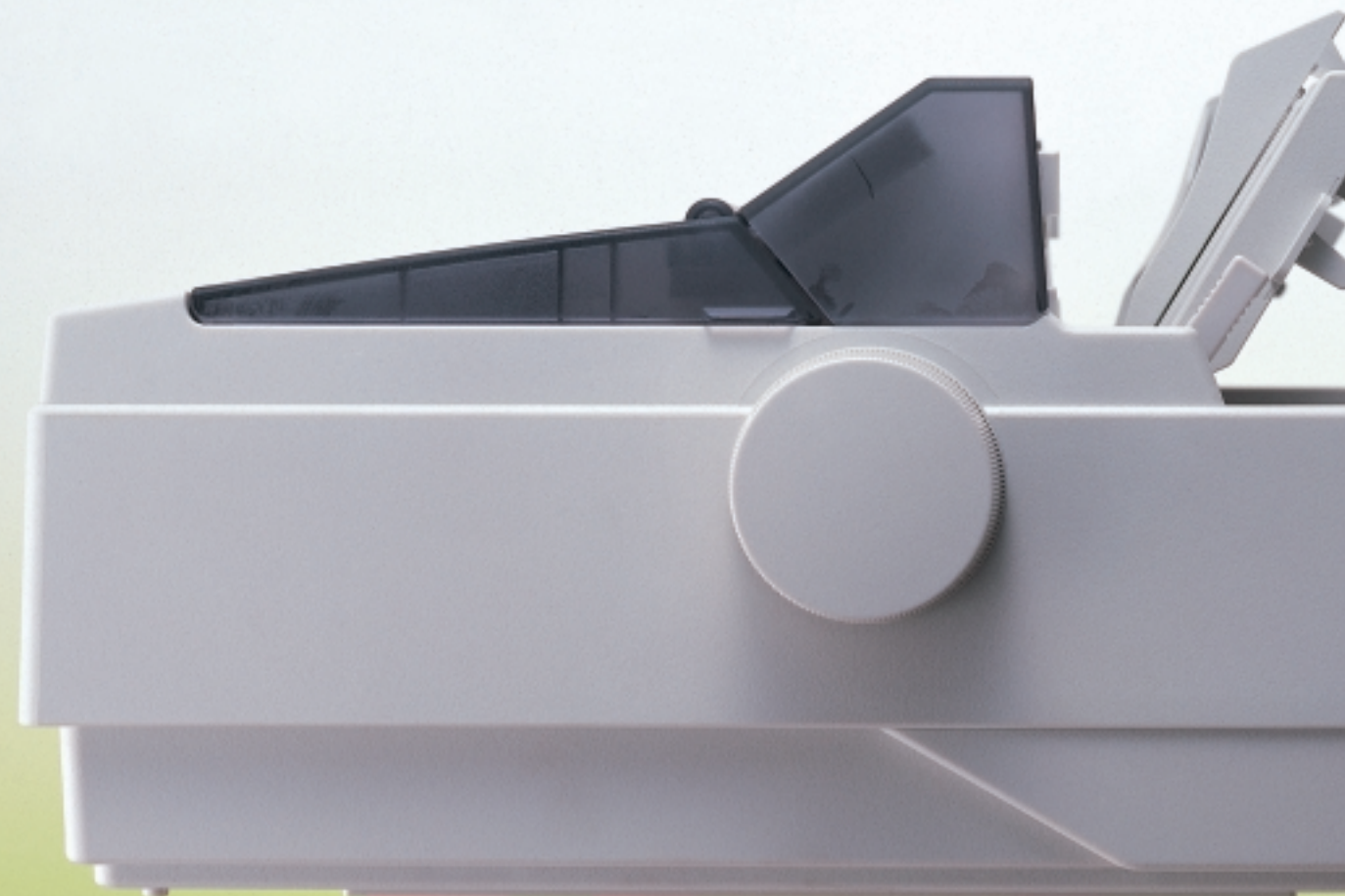


ESC/P™ "EPSON ESC/P stands for EPSON standard code for printers. This system of commands gives you software control of your printer from your computers. It is standard for all EPSON printers and supported by most application software for personal computers."
EPSON and EPSON ESC/P are registered trademark of SEIKO EPSON CORPORATION.
Microsoft, Windows and Windows NT are either registered trademarks or trademarks of Microsoft Corporation in the United States and/or other countries.
All other product names and other company names used herein are for identification purpose only and maybe the trademarks or registered trademarks of their respective owners.
EPSON disclaims any and all rights in those marks.
Print samples shown herein are simulations.
Specifications are subject to change without notice.

EPSON®

9-PIN DOT MATRIX PRINTER

LX-300+



*The Perfect Choice
for Affordable,
Compact Printing*

EPSON®

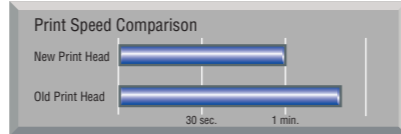
SEIKO EPSON CORPORATION

HEAD OFFICE
3-5, Owa 3-chome, Suwa-shi, Nagano, 392-8502 Japan
Phone: 0266-52-3131 Telex: 3362-435 (EPSON J)
Fax: 0266-53-4844

Speed

Significantly Faster Throughput

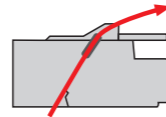
The LX-300+ now offers significantly faster throughput for higher productivity. In fact, Draft mode output at 10 cpi is 25% faster than before, and there's a new High-Speed Draft mode that delivers an astonishing 337 characters per second! An even pleasanter surprise is that the LX-300+ is still one of the quietest printers in its class.



Paper Handling

Improved Paper Handling

Versatile paper handling is something our printers are famous for, and the LX-300+ is no exception. In fact, it outdoes its predecessor with a new bottom-feed paper path that's ideal for handling complex, multi-page forms. Even on multi-page forms that are five layers thick, the LX-300+ delivers crisp, clean printouts to the very last page.

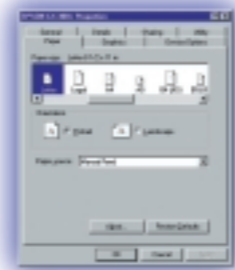


Bottom loading for complex, multi-page forms

Software

User-Friendly Software

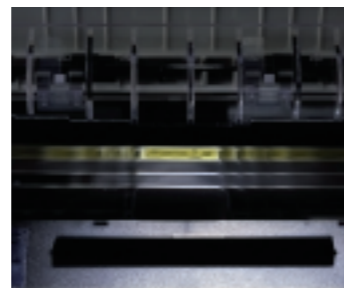
User-friendly driver software lets you monitor and control the LX-300+ from your PC. For MS-DOS users, our EPSON Remote! provides a streamlined, easy-to-use interface, and for Windows® 95/98/2000 and Windows® 4.0 users, there's a full-featured driver with the real-time monitoring convenience of EPSON Status Monitor 3.



Reliability

Energy-Saving Reliability

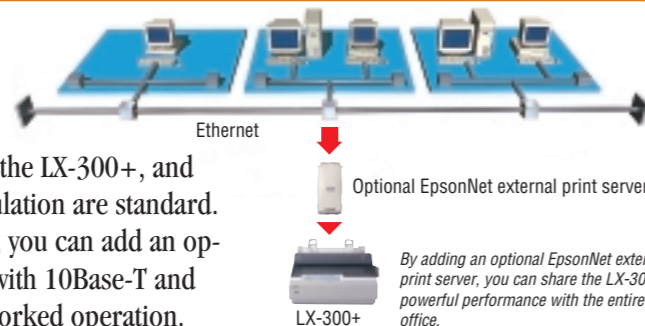
Energy-efficient electronics and a redesigned print head keep power consumption low, and when the printer is idle, a new Sleep mode saves you even more money. Rugged construction and premium-quality components assure long service life with minimum downtime.



Network

Versatile Networking

Parallel and serial ports are built into the LX-300+, and ESC/P support and IBM 2380Plus emulation are standard. In more complex office environments, you can add an optional EpsonNet external print server with 10Base-T and 100Base-Tx connectivity for fully networked operation.



This powerful little printer has what it takes get the job done. It's predecessor, the best-selling LX-300, was already a winner. Now, the LX-300+ takes that performance a step further with faster throughput, more versatile paper handling, and an energy-efficient new design. It's a dot matrix printer that makes the competition want to head for the hills!

Best-of-class performance, of course. But this powerful workhorse even challenges printers one rank up!