

SPECIFICATIONS

BASIC

SCANNER TYPE	Flatbed colour image scanner
OPTICAL RESOLUTION	Main 4800 dpi x Sub 9600 dpi 216 x 297mm (A4, US Letter)
DOCUMENT SIZE	144 x 231mm (default and when using film holder) 35mm Strip film 6 frames x 4 35mm Mounted film 8 frames 120/220 film (max. 6 x 12cm) 3 frames 4" x 5" 2 frames 203 x 254mm (when using film area guide)

INTERFACE

USB2.0 (Type B receptacle connector x 1)
IEEE1394 (6 pin connector x 1)

CONFIGURATION

PHOTOELECTRIC DEVICE	Alternate 6 lines colour CCD with Micro-Lens 122,400 pixels (20400 x 2 Line x 3 colours)
LIGHT SOURCE	White cold cathode fluorescent lamp
SUB-SCANNING METHOD	Fixed document and moving carriage

PERFORMANCE

OUTPUT RESOLUTION	50 - 12800 dpi
COLOURS	Internal 48 bit (281.5 trillion colours) Output 48 bit (281.5 trillion colours) 24 bit (16.7 colours million) 16 bit (65,536 grayscale levels) 8 bit (256 grayscale levels) 1 bit Monochrome

SCANNING SPEED *3

REFLECTIVE SCANNING	A4 300dpi 12 sec
MONOCHROME *1	A4 300dpi 14 sec
24 bit COLOUR *2	A4 600dpi 29 sec

FILM SCANNING

35mm Positive film	2400dpi 57 sec
35mm Negative film	2400dpi 58 sec

FUNCTIONS

IMAGE QUALITY ENHANCER	Digital ICE Grain Reduction Color Restoration Dust Removal PRINT Image Matching II Optimized Auto Exposure Unsharp Mask with Noise Reduction De-Screening with Document Type Optimizer Tone Curve Adjustment with Histogram 1 Push Button Stand-Alone Application and Scan to File Feature Multi Purpose User Interface Multi Document Auto Detection Multi Document Auto Cropping Auto Skew Correction Multi Marquee Film Scanning Thumbnail Preview
EASY SCANNING	

SUPPORTED PLATFORMS

USB1.1	Microsoft® Windows® 98SE/ME/2000 Professional/XP Home Edition/ XP Professional (Pre-installed model or upgrade of Windows® 98SE/Me/2000 Professional pre-installed model) Mac OS® X 10.2 or later (SilverFast®; Mac OS® 9.2 or later)
USB2.0*	Microsoft® Windows® XP Home Edition/XP Professional/2000 Professional (Pre-installed model) Mac OS® X 10.2.7 or later * USB2.0 Host Driver by Microsoft is required
IEEE1394 (FIREWIRE)	Microsoft® Windows® ME/2000 Professional/XP Home Edition/ XP Professional (Pre-installed model or upgrade of Windows® Me/ 2000 Professional pre-installed model) Mac OS® X 10.2.7 or later (SilverFast®; Mac OS 9.2 or later)

ENVIRONMENTAL CONDITIONS

TEMPERATURE	5°C to 35°C (Operating)
HUMIDITY	10% to 80% without condensation (Operating)

ELECTRICAL SPECIFICATIONS

VOLTAGE	AC220-240V 50-60Hz
POWER CONSUMPTION	27 W (Operation) 19 W (Standby Mode) 4.8 W (Sleep Mode)

EPSON

Dealer's Stamp

Doc 04

For enquiries, contact your nearest EPSON sales representatives:
INDIA - (91) 802-305-15000, CALCUTTA - 287 1355/56, CHENNAI - 820 3941/42, MUMBAI - 825 7286, NEW DELHI - 644 7201/2/3
INDIA TOLL FREE NUMBER - 1600-440011 INDONESIA - (62) 21-572-3161 MALAYSIA - (60) 3-562-88288
PHILIPPINES - (632) 813-6567 SINGAPORE - (65) 6337-7911, (65) 6586-3111 THAILAND / INDOCHINA - (662) 670-0680



EPSON Perfection™ 4990 Photo
Weight=Approx. 6.7kg

*1 To use the USB port, consult the documentation provided with your PC for further information about USB connectivity. Please note that errors may occur if non-standard cables or multiple hub connections are used.

Scanning Speed Data Patterns

The thumbnail images below show the scanning patterns used to determine scanning speed specifications.



*1 Line Art (MEMO)



*2 Photo (Photo courtesy of ISO/JIS-SCID. Reprinted by permission.)

*3 System Configuration of Scanning Speed
CPU : Pentium 4, 2.4GHz
RAM : 512MB
I/F : USB2.0 Hi-Speed
OS : Windows XP Professional Edition
Software : Adobe Photoshop 7.0E

Scanning speed test results vary according to system configuration, dpi setting, and scan mode setting. However, documents and photos other than those pictured above can be substituted without significantly affecting test results.

As an ENERGY STAR® Partner, EPSON has determined that this product meets the ENERGY STAR® guidelines for energy efficiency.

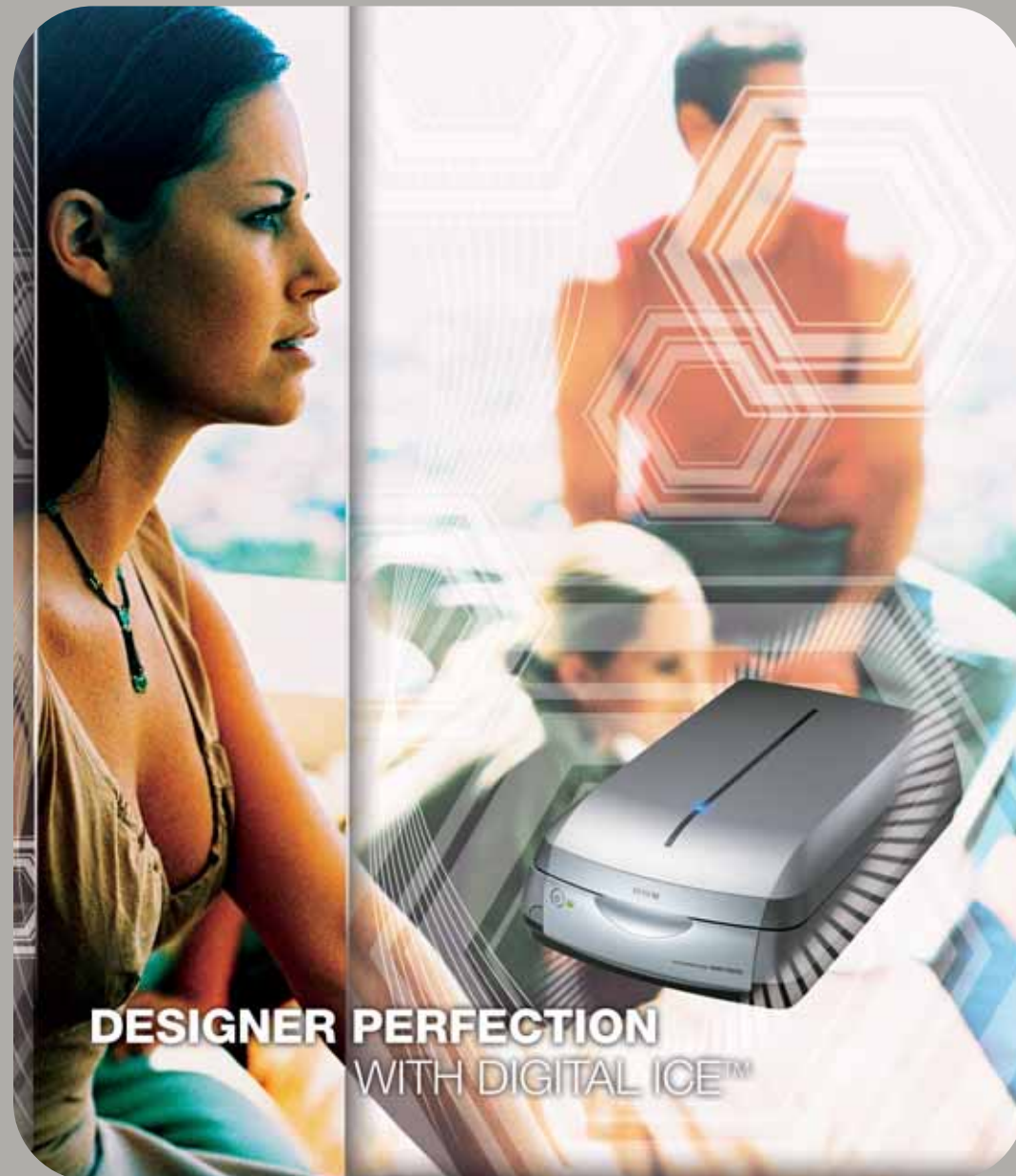
EPSON is the registered trademark of SEIKO EPSON CORPORATION.
EPSON Smart Panel is a trademark of SEIKO EPSON CORPORATION.
Adobe® Photoshop® is a trademark of Adobe System Incorporated.
SilverFast® and LaserSoft Imaging™ are registered trademarks of LaserSoft Imaging™ AG, Germany.
All other product names and other company names used herein are for identification purpose only and may be the trademarks or registered trademarks of their respective owners.
EPSON disclaims any and all rights in those marks.
Scan/Print samples shown herein are simulations.
Specifications are subject to change without notice.

www.epson.com.sg
www.epsonphoto.com.sg

COLOUR IMAGE SCANNER

EPSON PERFECTION™ 4990 PHOTO

EPSON



DESIGNER PERFECTION WITH DIGITAL ICE™

COLOUR IMAGE SCANNER

EPSON PERFECTION™ 4990 PHOTO



Professional immaculate scans for your graphics and photography work or interest. EPSON Perfection™ 4990 Photo is the definitive scanner for superior, reliable performance, always.

First-class scan quality of up to 4800dpi, a maximum Optical Density (OD) of 4.0 and Digital ICE™ at your fingertips, and an ultra-smooth scanning experience with improved speed and the all-new EPSON Creativity Suite! You can confidently enlarge your image to A2 size for printing.*

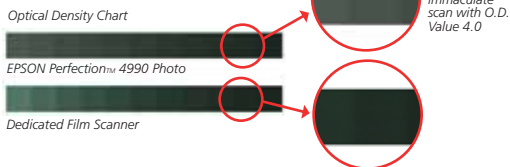
* For 35mm film at 4800dpi.

Immaculate Scanning Quality



Original image

Image scanned at 4800dpi



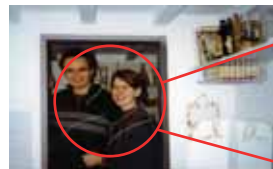
4800dpi MatrixCCD resolution

Graphics, artwork and photography compositions turn out in absolute pristine detail at up to 4800dpi and Optical Density (OD) of 4.0 – pinnacle in scanning excellence. For superb quality images, ultra-high precision Micro Step Drive and 48-bit colour depth images promises supreme clarity and colour consistency that rivals even dedicated film scanner.

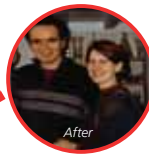
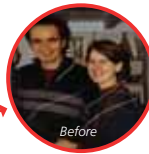
Excellent gradation for that immaculate scan with O.D. Value 4.0

Digital ICE™ perfection

Digital ICE™ combines hardware detection and software processing to correct and enhance images from film (Film ICE) and photo prints (Print ICE). New control options allow customizing the degree of correction. Dust removal on films and repair of tears on photos is simply a click away with the EPSON Scan driver.



Original scratched photo



Improved Speed and Productivity

Newly designed Moving Carriage type Transparency Unit (TPU)

Look forward to the fastest 4800dpi scan by EPSON. Negative film scanning is expedited by a new TPU with a silver sheet reflector and a bluish lamp that reduces exposure time. A built-in high speed Application Specific Integrated Circuit (ASIC) hyper processor speeds up image-processing time. Transfer data quickly with USB 2.0 Hi-Speed or IEEE 1394 interface.



Sleek moving LED to indicate scanner operation

Wide scan area TPU for simultaneous film scanning

Proceed with film-scanning work conveniently with bundled film holders in the integrated TPU that support multiple film sizes and formats.



Scan slide packs of up to 20 slides with the provided film area guide and print out proof sheet for filing and easy arrangement.



Proof Sheet

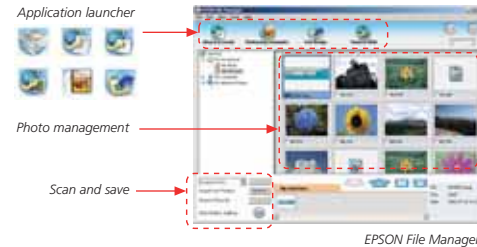


Unparalleled Ease of Use with EPSON Creativity Suite

EPSON Creativity Suite

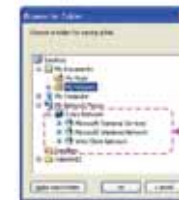
A software package for managing and manipulating digital photography needs. Central to the EPSON Creative Suite is EPSON File Manager – an application launcher and photo management software.

Completing your scanning needs are the bundled Optical Character Recognition software, Adobe Photoshop Elements and the powerful Lasersoft Silverfast® SE 6 for professional results.



EPSON File Manager

Sharing photos is easy with the photo printing, copying, emailing and Copy to Fax functionality. A new Scan to Network function is also added.



File Saving Setting Dialog

Network folders can be selected as file saving location



Go Professional with EPSON Perfection™ 4990 Photo

Go for designer perfection, with immaculate scans. Achieve perfect graphics and photography work with EPSON Perfection™ 4990 Photo.

