

EPSON® Scanner Range

Warranty Programmes

EPSON products are supplied with award winning warranty and support services as standard.



To ensure you continue to enjoy complete confidence in your EPSON Scanner, it is supported by a 1 year Call-Out or 1 year On-Site warranty. For additional peace of mind, optional EPSON CoverPlus extended warranties can be purchased within 90 days of the product it is to cover.



EPSON CoverPlus Extended Warranties

- 3 year warranty.
- Peace of mind.
- Minimal down time.
- EPSON Authorised Engineers and EPSON original spares used – providing assurance that the engineer repairing the product has been trained by EPSON and will use EPSON specific parts.
- Can be purchased like any other EPSON product. Each group has a unique part number. *
- Cover is available in mainland UK, Northern Ireland and the Republic of Ireland. **
- Warranty is transferable if the product is sold on.

For further details on EPSON CoverPlus Extended Warranties, contact your EPSON dealer or call EPSON FREE on 0800 220546 (UK), or 1800 409 132 (Ireland).

* Must be registered within 90 days of purchasing the product it is to cover.

**The mainland of these countries, islands having a direct road connection to them and the Isle of Wight.

| Product | 3 year warranty | 3 year on-site warranty |
|--------------------------|-----------------|-------------------------|
| Perfection 640U | ECPGRP10 | ECPGRP20 |
| Perfection 1240U | ECPGRP20 | ECPGRP25 |
| Perfection 1240U PHOTO | ECPGRP20 | ECPGRP25 |
| Perfection 1640SU | ECPGRP20 | ECPGRP30 |
| Perfection 1640SU OFFICE | ECPGRP20 | ECPGRP30 |
| Perfection 1640SU PHOTO | ECPGRP20 | ECPGRP30 |
| Expression 1680/1680Pro | N/A | ECPGRP40 |
| Expression 1640XL | N/A | ECPGRP70 |
| GT-10000 + /Pro | N/A | ECPGRP50 |
| GT-30000 | N/A | ECPGRP90 |

EPSON Award-winning Support



The EPSON Customer Interaction Centre (CIC)

To ensure market-leading support into 2000 and beyond, we have recently opened the EPSON Dedicated

Customer Interaction Centre (CIC) – a state-of-the-art facility that offers 7 day telephone and e-mail support for the entire EPSON product range.

EPSON on the Web

Available 24 hours a day, 365 days a year, the EPSON Website is an invaluable resource which features full technical support, the latest driver downloads, everything you need to know about our latest products and much, much more.

In addition to providing full support for any questions or enquiries you may have regarding your scanner, we want to keep you informed of all the latest EPSON developments, not only for scanners, but for the whole range of EPSON products.

Pre-Sales Support Information:

Tel: 0800 220546 (UK) or 1800 409 132 (Rep of Ireland)

Scanner Support Line:

08702 413 453 (UK) or 01 679 9015 (Rep of Ireland)

Web Support: For all the latest drivers, updates and product information

www.epson.co.uk

EPSON (UK) Ltd,

Campus 100, Maylands Avenue,
Hemel Hempstead, Hertfordshire HP2 7TJ. UK.
Telephone: +44 (0) 1442 261144
Fax: +44 (0) 1442 227227
E-mail: info@epson.co.uk
Home Page: www.epson.co.uk

Specifications subject to change.

All manufacturers trademarks acknowledged.

EPSON® Scanner Range



*High quality scanning solutions
for home, graphics and business users*

- High speed flatbed scanning up to A3+ size
- EPSON's world beating Advanced Scanning Technologies
- 600 x 2400dpi to 1600 x 3200dpi resolution, up to 48-bit colour
- Excellent connectivity to PC, Mac and Network users
- Easy to use, fully featured scanner drivers
- Dedicated film and multiple document configurations

EPSON Scanner Range



A comprehensive range of high quality home, graphics and business flatbed scanners from the world leader in digital imaging solutions



A scanner has become essential equipment for computer users at home, in the studio or at the office. Built to add creativity and functionality to a range of PC and Mac environments, EPSON has the perfect scanning solution to suit your needs - whether you're having family fun at home, or are part of a high throughput business network.

EPSON scanners are designed to offer the ultimate combination of quality A4, A3 or A3+ input, ease of use and value for money. EPSON's Advanced Scanning Technologies lead the way, enabling users to capture photos, documents and graphics in all their original glory - but that's just the start, because our outstanding range of software bundles take creativity to a new level.

A digital revolution

Now anyone with a computer can make high quality scans which were once only available from costly bureaux or copy shops. At the touch of a button, photographs, transparencies, negatives, news clippings, reports, letters, documents and a whole host of other keepsakes and business materials can be captured safely and accurately as digital files on your own desktop.

Then they can be enlarged, enhanced or amended, incorporated into other documents, e-mailed, posted on Web pages, printed out or simply organised, stored and preserved safely in virtual filing systems.

World-beating quality and speed

EPSON's exclusive Advanced Scanning technologies and precision optics enable exceptionally high resolution scanning with minimum fuss, so you can be sure that whether you're scanning colour photos or mono text documents, their colour and sharpness will be maintained. But this remarkable performance is achieved without compromising speed, so your scans will be ready to take to the next stage in a flash.

Simple performance every time

Everything about our scanners is designed to make the process as automatic and straightforward as possible, and thanks to EPSON's Start Button, you can access the exceptional capabilities of the

EPSON scanner range with one-touch ease. For more experienced users, extensive manual adjustments can be made, but when you need great results with minimum input, your scanner will take care of it for you.

Designed to suit any environment

The latest aesthetic designs ensure that EPSON scanners look good, while compact dimensions and quiet operation make minimum demands on your desk space. There are a number of configurations available to suit networked, photographic or high document throughput situations, with the option of a versatile Film Adapter for scanning transparencies or negatives from 5" x 4" up to A3 format, or an Automatic Document Feeder for 'hands-free' scanning of up to 100 pages at up to 30ppm.

EPSON scanners can also be integrated quickly and effectively into stand-alone or networked PC or Mac environments, with configurations including USB, SCSI or optional FireWire support, to ensure perfect data accuracy at top speed.



USB
UNIVERSAL SERIAL BUS

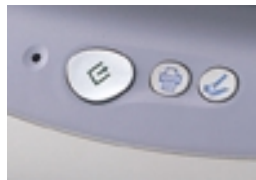


EPSON Smart Panel

EPSON's Perfection series scanners feature EPSON Smart Panel software - a suite of user-friendly tools that lets users program the Start Button to launch the application of their choice, and to define the type of scanning they want to carry out. The following options are available:



- Copy - Scans and copies the original via a clear copier control panel
- E-Mail - Scan and send as e-mail attachments
- OCR - Scans and converts documents into editable text
- Photo Print - Scans and reprints in a range of sizes and layouts
- Application - Scans and imports images directly into the application of your choice
- Creativity - Scans directly to Adobe® PhotoDeluxe



EPSON QuickStart Buttons

All EPSON scanners have the excellent EPSON Start Button, but the EPSON Perfection 640U and 1240U scanners also feature EPSON's latest QuickStart system, comprising three simple buttons on the front of the scanner. In addition to the programmable EPSON Start Button, users can use the Copy button as a short cut to the Smart Panel copy function or the Scan button for scanning direct to Adobe Photo Deluxe.

EPSON TWAIN Drivers for flexibility and control

EPSON drivers are packed with features designed to give you comprehensive but simple control of the entire scanning process. All feature clear, information-packed user interface screens. The Perfection Series have TWAIN L or TWAIN 5 drivers which offer a wide range of functions including Full Auto mode which scans to the application without any user involvement.

Other features include Auto Exposure for maintaining pure white backgrounds; Auto Document Recognition which optimises scanner settings to match the original (eg colour photo, mono document), sophisticated new colour smoothing for block-colour illustrations and Auto Skew correction which detects the alignment of the original (or originals) and automatically straightens it when the data is transferred to the application.

In fact, by using the Multi Photo Scanning function, several photographs can be placed on the scanner bed, auto located, exposed and skew corrected at the same time, and you can even scan each one into a separate window.

EPSON Expression and GT Series scanners feature EPSON TWAIN Pro driver software, which is equally simple to use but amazingly effective. Features include Batch scanning, Auto Exposure and Multiple Marquees, as well as EPSON TWAIN Pro Network and Scan Server software for high quality network support.



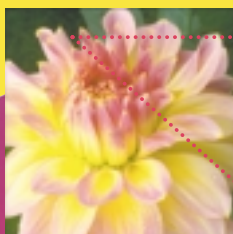
EPSON Advanced Scanning Technologies

Leading the way in scanning technology

EPSON Advanced Scanning Technologies are being continually developed to provide the ultimate in text sharpness, perfect focus and colour accuracy. You can be sure that every Perfection, Expression and GT Series scanner has been built to offer the ultimate performance at every stage of the scanning process.

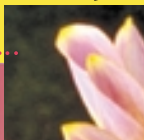
High resolution, high performance

EPSON's high quality, large diameter, precision optical lenses are quality controlled to ensure superior sharpness and clarity, and work seamlessly with EPSON Micro Step Drive - an exclusive development which advances the scan head in tiny, highly controlled increments - to ensure consistent quality throughout the entire length and width of your scans at optical resolutions from 600 x 2400dpi to 1600 x 3200dpi.

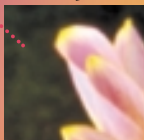


High resolution 1600 x 3200dpi scanning assures superb image detail and edge definition.

1600dpi



800dpi



Excellent Text scanning

Text Enhancement Technology ensures maximum text recognition, even when documents feature coloured backgrounds, have diagrams behind the text or are printed on thin media which can 'show through' printed information from the reverse side. This is further enhanced by Automatic Area Segmentation, which separates text and photographic elements of a document, processing each at optimum settings to ensure the sharpest text whilst maintaining subtle gradations in images.

Colour Quality

EPSON scanners are capable of high quality colour processing, with the Expression 1680/PRO achieving up to 48-bit processing, recognising over 281 Trillion colours and 65,000 shades of grey.

This is combined with colour matching for industry standards including Windows ICM, sRGB and Mac ColorSync to provide a scanned image which retains all the colour depth and accuracy of the original. Also, simultaneous RGB scanning ensures superior colour fidelity by continuously capturing and processing Red, Green and Blue data as the scan head advances.

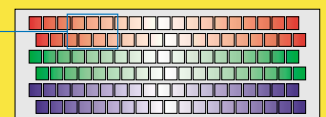
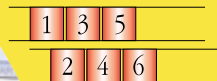
Superior film and transparency scanning

Dynamic Range Control is another unique EPSON development, a professional-standard technology that is particularly effective in transparency scans, but also ensures the best printed or negative film scanning by taking into account different dynamic ranges. The result is improved overall quality with particular improvement in shadow detail in dark-coloured areas

EPSON MatrixCCD™ Technology with On Demand Pixel Optimiser

The majority of the EPSON Scanner range features EPSON's cutting edge alternate MatrixCCD™ technology, which utilises a staggered array of sensors to collect information which is then merged into a single line to effectively double the scanning resolution.

This is carried out by the high performance image processing ASIC (Application Specific Integrated Circuit) which also assures virtually instantaneous image display and reduces the load on your computer, allowing it to perform other tasks while data-intensive high-resolution scanning is in progress. At low resolutions, the On Demand Pixel Optimiser allows ultra high speed scanning by only utilising one line of pixels, which reduces the time taken to read the colour information as the head moves down the scanning bed.



EPSON MatrixCCD™ Technology



EPSON Expression 1680 PRO

EPSON High-Quality Bundled Software

An EPSON scanner comes complete with everything you need to start scanning straight away. In addition to outstanding driver software, they also include a range of bundled software packages which provide endless opportunities for managing, enhancing and printing your scans.

Adobe® PhotoDeluxe

(Perfection 640U, Perfection 1240U/PHOTO, Perfection 1640SU/OFFICE/PHOTO)

Based on Adobe® Photoshop, the worldwide industry standard among photo professionals, with templates, editing tools, organisers and plenty of special effects for adding a personal touch to your scans. Includes Adobe® Connectables, a free monthly activities guide accessed via the Web.

Adobe® PhotoDeluxe Business Edition

(GT-10000+)

A business-oriented version of the above, designed to help users to create professional-looking brochures and promotional materials. Also includes Adobe's PDF Writer for publishing materials in Acrobat format.

Adobe® Photoshop 5.0 Limited Edition

(Perfection 1240U PHOTO, Perfection 1640SU PHOTO, Expression 1680/PRO, Expression 1640XL/PRO)

A specially-tailored version of the world's leading design and production software, providing comprehensive image editing facilities for general office applications.

Adobe® Acrobat Reader

(Perfection 1240U PHOTO, Perfection 1640SU PHOTO, Expression 1680/PRO, Expression 1640XL/PRO)

This versatile software allows you to view and print PDF files on all major platforms.

NewSoft Presto! PageManager

(GT-10000+, Expression 1680/PRO, Expression 1640XL/PRO)

Transforms your scanner into a multi-function scanning, filing and communications device. Automatically opens the required application and enables one-touch scanning directly into e-mail, fax, image editing or OCR programs.

EPSON SmartPanel

(Perfection 640U, Perfection 1240U/PHOTO, Perfection 1640SU/PHOTO/OFFICE)

This comprehensive software offers scanning to e-mail, OCR and photo editing applications.

TextBridge Classic

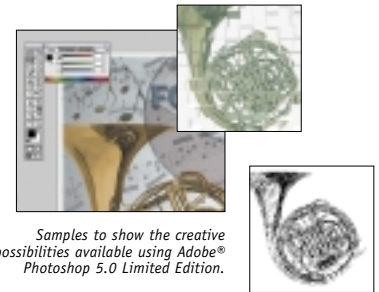
(Expression 1680/PRO, Expression 1640XL/PRO)

An Optical Character Recognition (OCR) package which allows you to scan documents and capture written text to edit or use in other work or projects without having to type a single word yourself.

TextBridge Pro

(Perfection 1240U/PHOTO, Perfection 1640SU/OFFICE/PHOTO, GT-10000+)

Advanced OCR program that turns scanned text into editable word processing files with amazing speed and accuracy. It can even recognise columns, pictures and drop caps - and recreate tables as word processing cell tables or spreadsheets.

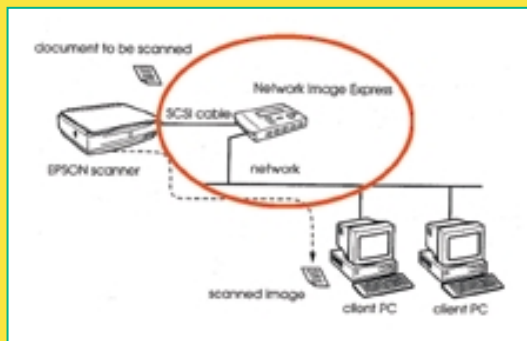


Samples to show the creative possibilities available using Adobe® Photoshop 5.0 Limited Edition.

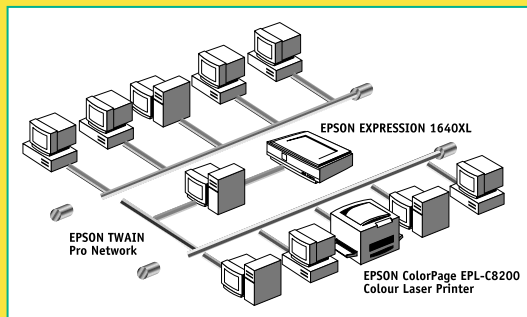
A range of networking solutions – including the new EPSON Network Image Express

The Expression and GT Series scanners are fully networkable, enabling multiple users and workgroups to share the capabilities of these high powered scanners. This can be achieved with the inclusive EPSON Scan Server software or with the new EPSON Network Image Express – a new hardware scanner server which eliminates the need for a network PC to host the EPSON Scan Server software.

(Compatible with Expression 1680/PRO, Expression 1640XL/PRO, EPSON GT-10000+/PRO, GT-30000)



The EPSON Network Image Express replaces the need for a network PC to host the EPSON Scan Server software, whether Windows or Macintosh based. Access to the full use of all scanner features is possible when EPSON TWAIN Pro Network v1.7 or later is installed.



DRIVER SOFTWARE

EPSON TWAIN L

(Perfection 640U)

Designed for simplicity, EPSON TWAIN L offers powerful control of the Perfection 640U in only a few easy steps.

EPSON TWAIN 5

(Perfection 1240U/1640SU Series)

New EPSON TWAIN 5 driver software bring unprecedented levels of flexibility to scanner operation. With Full-Auto mode it automatic previews and analyses the content of each scan, applying exposure settings appropriate to each original. Features also include Automatic Skew Correction, Document Type Recognition and multi-image scanning.

EPSON TWAIN Pro

(1640XL/PRO, GT-10000+/PRO, GT-30000)

Enhanced driver software including Batch Scanning, Multiple Marquees, De-screening, Multiple Frame Scanning, Text Enhancement Technology (TET) and Automatic Area Segmentation (AAS). Also offers a variety of user friendly settings.

EPSON TWAIN Pro Network and

EPSON Scan Server

(Expression 1680/PRO, 1640XL/PRO, GT-10000+/PRO)

Network scanning is simple to set up, using the EPSON Scan Server and TWAIN Pro software. TWAIN Pro Network provides all the features offered in the standard TWAIN Pro driver.

EPSON TWAIN Pro 2

(Expression 1680/PRO)

Alongside the standard TWAIN pro features, TWAIN Pro 2 also includes a Densitometer, an improved 3-level unsharp mask, enhanced auto exposure (especially for working with film) and an upgraded colour management system.

EPSON TWAIN HS

(GT-30000)

A higher speed version of the EPSON TWAIN software for faster processing - ideal for efficient document management.

EPSON PERFECTION™ 640U

Compact, high quality A4 scanner bringing simple operation, flexibility and value to home users

The EPSON Perfection 640U is an excellent introduction to EPSON's amazing scanner range. Built to bring maximum colour and creativity to all sorts of family applications, this amazing scanner makes the whole scanning process as quick and easy as possible- from installation to outstanding results that are ready to be edited, printed, e-mailed, used in projects or stored safely for later.

Professional results from your own desktop

With EPSON's world famous image quality and best-in-class speed, the EPSON Perfection 640U captures documents or photos crisply, clearly and in rich, natural 36-bit colour. Whether you want to scan text, handwriting, images, graphics or a combination of them all, you can be sure that EPSON's Advanced Scanning Technologies will ensure the best results around.

Simple operation for the whole family

With EPSON's 3 QuickStart buttons, all you need to do is place the original on the scanner and push Start, Copy or Scan. The comprehensive capabilities of EPSON's SmartPanel software is also just a touch away, providing all the simple instructions you need to tailor your scanner to do everything just the way you want it. It really is as simple as that - then it's time to get creative.

Designed for PC and Mac set-ups

Whether you use a PC, iMac™ or other Mac computer, the EPSON Perfection 640U can be connected quickly and simply. Provided your computer has a USB interface, all you need to do is plug it in and you're ready to go.

Good looks and practicality

The EPSON Perfection 640U is not just a remarkable performer, it looks amazing too. What's more, when not in use, the standard Upright Support Base provides a simple, safe way to store it and keep your desktop clear for other activities.



WHAT PC
Best Buy
February 2001



Personal Computer
World
Editors Choice
February 2001

Key Features

- High Quality 600 x 2400dpi optical resolution with Micro Step Drive
- Maximum interpolated resolution 9600dpi
- Exceptionally fast scanning speeds
- 3 QuickStart buttons for easy one-touch scanning, editing and copying
- EPSON SmartPanel for scanning to e-mail, OCR and Photo Editing applications
- 36-bit internal scanning capability - recognises 68 billion different colours
- Easy to use plug and play USB interface
- Aesthetic design adds style to any desktop
- PC and Mac compatible
- Space-saving with Upright Support stand for storage
- 1 year Call-Out warranty
- Optional 3 year CoverPlus extended warranty



The Perfection 640U Scanner comes complete with a stylish storage stand

BUNDLED SOFTWARE:

Adobe® PhotoDeluxe

EPSON SmartPanel with built-in OCR capabilities

EPSON TWAIN L



EPSON PERFECTION™ 1240U/PHOTO

Exceptional 1200 x 2400dpi A4 scanner for advanced family and small home office users

The EPSON Perfection 1240U is a high specification scanner which combines impressive resolution and 42-bit colour without compromising speed or ease of use. It is simplicity itself to set up and operate, with a USB interface, the 3 new EPSON QuickStart buttons, enhanced EPSON TWAIN driver and a variety of bundled software designed to bring out the best in a wide range of demanding scanning activities.



World-beating technology

This advanced scanner has got what it takes to capture amazingly crisp, clear images and text with fine detail and jaggy-free edge definition, and like every EPSON scanner, this performance is easy to access, thanks to new standards in scanning simplicity and convenience. There's no better way to achieve 1200 x 2400dpi and 42-bit colour every time.

EPSON SmartPanel and QuickStart Buttons

Designed to offer the simplest route to exceptional scanning output, the EPSON Perfection 1240U includes the latest EPSON innovations which enable users to tailor their scanner to their specific needs. The EPSON Start Button provides one-touch scanning simplicity, but with the added benefits of the Copy and Scan buttons, and the comprehensive EPSON SmartPanel, your scans can be copied, sent directly to the application of your choice, created as e-mail attachments, opened ready for enhancement in Adobe® PhotoDeluxe or arranged in various sizes and layouts.

EPSON TWAIN 5 Driver Software

In Full Auto mode, the scanner automatically previews and analyses the content of each scan and applies the exposure settings that are most appropriate for the type of original you are working with. And you don't need to worry about how the originals are placed either, because any skew will be corrected for you - in fact, you can even place several small images on the platen and scan each one into a separate window.

Fully adaptable for photographic requirements

For comprehensive photo support and added flexibility, an optional film adapter is available for scanning positives and negatives up to 5"x4" size. This is included as standard on the EPSON Perfection 1240U PHOTO.



EPSON Perfection 1240U

BUNDLED SOFTWARE:

Adobe® PhotoDeluxe
TextBridge Pro
Adobe® Photoshop 5.0 Limited Edition
(1240U PHOTO only)
EPSON SmartPanel
EPSON TWAIN 5

Key Features

- High quality 1200 x 2400dpi optical resolution with low noise MatrixCCD™ and Micro Step Drive
- Maximum interpolated resolution of 9600dpi
- 42-bit in/out scanning capability for excellent colour reproduction
- Easy to use EPSON SmartPanel for one-touch scanning to e-mail, OCR and Photo Editing Applications
- 3 quickstart buttons for easy one-touch scanning, editing and copying
- Easy and intelligent EPSON TWAIN 5 software - Full Auto mode for simplicity
- Class-leading speed
- Optional Film Adapter for scanning film and slides up to 4"x5"*
- Easy plug and play USB interface
- PC and Mac compatible
- 1 year Call-Out warranty
- Optional 3 year CoverPlus extended warranty

*Standard on the EPSON Perfection 1240U PHOTO



WHAT DIGITAL
CAMERA
Best Buy
January 2001



PC PRO
Recommended Choice
March 2001



THE NET
Best Buy
April 2001

EPSON PERFECTION™ 1640SU/PHOTO/OFFICE



A4 high quality, 1600 x 3200dpi superior home and office scanning solution

The EPSON Perfection 1640SU is EPSON's Premium consumer scanner – a perfect combination of 1600 x 3200dpi quality, comprehensive connectivity and ease of use. It brings professional levels of performance into the home, adding quality and flexibility to everything from schoolwork and family fun to advanced home office or photographic applications.

EPSON Advanced Technologies for quality and speed

Featuring a 1600dpi alternate MatrixCCD™ with EPSON Micro Step Drive for a subscanning resolution of 3200dpi, the EPSON Perfection 1640SU series is able to capture images and text in maximum detail, while the internal and external 42-bit colour depth enables up to 4.4 trillion colours and 16,384 shades of grey to be recognised.

Software support for every application

EPSON SmartPanel software and TWAIN 5 scanner driver provide all the power and flexibility needed to create scans that really make an impact, simply and

with minimum effort. Everything can be taken care of automatically - Auto Skew correction will even ensure perfect alignment of your originals, and you can programme the EPSON Start Button to launch your chosen application of choice.

Comprehensive compatibility, Flexible connectivity

Built-in USB and SCSI interfaces provide a choice of simple plug and play connectivity, or the high speed advantages of an SCSI connection, while compatibility with PC and Mac computers ensures that whatever your home set-up, you can integrate this superb scanning partner.

A choice of configurations to suit

To enhance the capabilities of the standard EPSON Perfection 1640SU and enable users to tailor their scanner to match their high throughput photographic or document-based activities, two options are available - the Transparency Unit (included as standard on the EPSON Perfection 1640SU PHOTO) and the Automatic Document Feeder (included as standard on the EPSON Perfection 1640SU OFFICE).

Key Features

- optical resolution with low noise MatrixCCD™ and Micro Step Drive
- 42-bit in/out scanning capability for excellent colour reproduction
- USB and SCSI interfaces
- EPSON SmartPanel for scanning to e-mail, OCR and Photo Editing applications
- EPSON Start Button for easy one-touch scanning
- Easy and intelligent EPSON TWAIN 5 software - Full Auto mode for simplicity
- Class-leading speed
- Maximum interpolated resolution of 12,800dpi
- Optional Film Adapter for scanning film and slides up to 4"x5"*
- Optional 30 sheet Automatic Document Feeder** for scanning up to 5.5ppm
- PC and Mac compatible
- 1 year Call-Out warranty
- Optional 3 year CoverPlus extended warranty

* Standard on the EPSON Perfection 1640SU PHOTO
**Standard on the EPSON Perfection 1640SU OFFICE

BUNDLED SOFTWARE:

Adobe® PhotoDeluxe

TextBridge Pro

Adobe® Acrobat Reader

Adobe PhotoShop 5.0 Limited Edition (1640SU PHOTO only)

EPSON SmartPanel for Scanner

EPSON TWAIN 5



EPSON Perfection 1640SU PHOTO



EPSON Perfection 1640SU OFFICE



WHAT PC?
Recommended
February 2001

LaserSoft SilverFast Ai 5 Intelligent Scanning Software

New software available with the EPSON Expression scanners



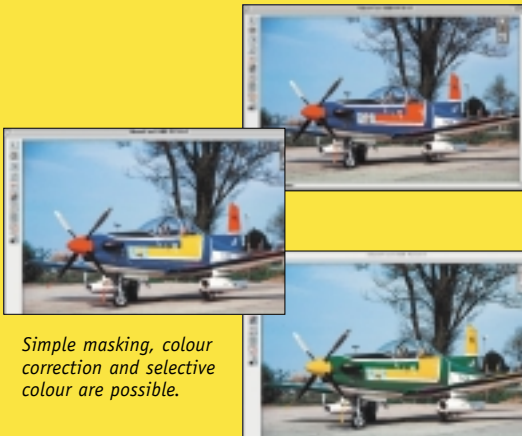
SilverFast Ai 5 is a professional software package that has everything you need to create perfect scans,

almost regardless of what your originals may look like. Want to enhance or amend colours, adjust gradations, eliminate 'noise', combine images, zoom into details, remove unwanted subjects? SilverFast Ai 5 can do all this with ease, and much more besides.



Four measuring points – four Densitometers

Every aspect of SilverFast Ai 5 offers amazing sophistication combined with flexibility and ease of use. All operations are monitored on a large-self-adjusting preview and are updated in real-time through sliders or numerically, which means that your images will change before your eyes as you modify them. And there's plenty of freedom to experiment thanks to the unlimited undo feature that can always take you back to previous settings.



Simple masking, colour correction and selective colour are possible.



LaserSoft SilverFast Ai 5 professional imaging software

Now you can enjoy unparalleled flexibility and release the unlimited potential of your scans. By incorporating ScanPilot® software users are provided with a step-by-step guide in order to achieve the best possible image quality, making sure that you get exactly the results you are looking for every time (and probably discovering more than a few new ideas along the way).

Whether you are new to scanning or highly experienced, SilverFast Ai 5 is the perfect package. To make things simple, it features artificial intelligence for amazing automatic changes, or if you want to be more involved, each operation can be adjusted numerically and monitored through an on-screen densitometer. The Expression Pro models also include the LaserSoft IT-8 Target Calibration Kit, with both reflective and transparency targets.



SilverFast Ai 5 is a major addition to the EPSON Expression scanner range. By combining EPSON's unbeatable scanning technologies with this highly versatile software, everyone can now enjoy truly professional scanning capabilities.

New Highlights in Version 5

- Drag & Drop
- Freehand-Simple-Masking in Selective Colour Correction
- CMYK-Channel Separation
- Colour Cast Removal Slider
- Multi-Sampling Dynamic Range Enhancement
- Multiple Densitometer - Pipette
- New File Formats
- Three Part Histogram
- Navigation Services and Appearance Manager Support (Mac only)
- Better Measurement Unit Support
- Permanent Softproof
- Realtime Correction
- Macintosh OS 7.5 or later
- Windows 95/98/NT/2000



EPSON® EXPRESSION™ 1680/PRO

Exceptional 48-bit A4 scanner for photographers and graphic arts professionals

A remarkable breakthrough in high quality imaging, the EPSON Expression 1680 offers graphics professionals 1600 x 3200dpi optical resolution and true 48-bit colour. Optimised to consistently deliver enhanced colours, subtle highlights and sharp shadow detail, this scanner sets exceptional standards in quality, whilst maintaining EPSON's dedication to ease of use and value for money.



Unbeatable EPSON 48-bit colour and Dual Focus System

Whatever your original, the EPSON Expression 1680 delivers outstanding quality. Smooth gradations and amazing colour are assured by the scanner's ability to recognise more than 280 trillion colours (48-bit) and 65,000 shades of grey (16-bit), while EPSON's exclusive Dual Focus System eliminates the 'Newton Ring' effect often found on less sophisticated scanners to ensure clear, sharp results every time, on reflective or transparent media.

The best results – quickly and easily

Enhanced productivity is made possible by amazingly high speed image processing – whether you are scanning photos, negatives, slides or documents, the EPSON Expression 1680 will deliver previews or finished scans in double-quick time. And perfection has never been easier to achieve, because although you can control a whole host of settings, the EPSON Start button provides simple, one-touch perfection.

Excellent connectivity



To ensure that quality is matched by flexible connectivity for PC and Mac users, the EPSON Expression 1680 includes standard SCSI and USB interfaces, with optional IEEE-1394 (FireWire) support for unprecedented data transfer capabilities. The scanner can also be fully networked via EPSON TWAIN Pro software or the dedicated EPSON Network Image Express hardware scanner server.

Built for photo and graphics professionals

The optional transparency unit (standard on the EPSON Expression 1680 Pro) provides a simple, high quality photographic scanning solution for transparencies from 35mm to 8" x10" size. For higher throughput jobs, the optional Automatic Document Feeder provides the perfect solution to multiple-scanning with minimum user input.

BUNDLED SOFTWARE:

Adobe® Photoshop 5.0 Limited Edition
TextBridge Classic

Presto! PageManager for Networks
EPSON TWAIN Pro 2

EPSON TWAIN Pro Network and Scan Server
SilverFast Ai5, with IT-8 Calibration
(2 IT-8 Targets included with PRO model)

Key Features

- 1600 x 3200dpi optical resolution with EPSON Micro Step Drive
- True 48-bit colour scanning
- EPSON MatrixCCD Technology for added quality and dynamic range at high speed
- EPSON Dual Focus System
- Exceptional dynamic range - 3.6D
- PC and Mac compatible
- USB, SCSI and optional IEEE-1394 (FireWire) connectivity
- EPSON TWAIN Pro 2 and TWAIN Pro 2 Network
- High quality software bundle including SilverFast Ai5 with IT-8 calibration – the professionals choice
- Quiet operation
- Optional A4 Transparency Unit*
- Optional Automatic Document Feeder
- Optional EPSON Network Image Express hardware scanner server for simple network integration
- 1 year On-Site warranty
- Optional 3 year CoverPlus extended warranty

*Standard on EPSON Expression 1680 Pro



EPSON EXPRESSION 1680PRO

EPSON® EXPRESSION™ 1640XL



No compromise A3+ scanning solution for stand alone or networked graphics professionals

The EPSON Expression 1640XL provides graphics professionals with the ultimate desktop tool for capturing colour images up to A3+ size. Outstanding 1600 x 3200dpi resolution, a maximum optical density of 3.6D and 42-bit internal and external colour depth - that's 4.4 trillion colours - provide unbeatable richness, detail and clarity, whilst maintaining EPSON's world-renowned dedication to user friendliness, flexibility and connectivity.

Unbeatable quality

This remarkable scanner is a showcase for EPSON's latest, most advanced scanning technologies, enabling 1600 x 3200dpi resolution and superior accuracy at up to 6mm from the flatbed. Amazingly, this performance is all available at a faster pace than ever, and with a zero standby time your scanner will always be ready when you are.

Comprehensive software makes professional scanning simple

The latest EPSON TWAIN Pro driver software is sophisticated but easy to use, with professional image management features including multiple marquee, scan to fit, highlight/shadow adjustment and gamma, moiré and tone correction. You can also see a 'live' preview of your final scan, and add an expert touch with bundled software packages including Adobe® Photoshop 5.0 Limited Edition and Textbridge Classic.

Connectivity to suit any environment



Perfectly suited to both Mac and PC users, the EPSON Expression 1640XL has standard USB and SCSI interfaces, with optional IEEE 1394 support. It can also be networked, either with EPSON Scan Server software, or with the new EPSON Network Image Express - the new hardware server which enables direct network access to EPSON professional scanners.

BUNDLED SOFTWARE:

Adobe® PhotoShop 5.0 Limited Edition
Presto! PageManager for Networks
TextBridge Classic
EPSON TWAIN Pro
EPSON TWAIN Pro Network + Scan Server
SilverFast Ai5 Software, with IT-8 Calibration
(2 IT-8 Targets included with PRO model)



PC Magazine
Editors Choice
February 2001

Optional Transparency Unit* and Automatic Document Feeder

The optional Transparency Unit enables exceptional scanning of transparencies up to A3 size. 35mm scans are suitable for instant printing up to A6 size, while 4" x 5" positives can be printed out up to A2. In addition, the Optional 100 Sheet Automatic Document Feeder makes short work of multi-page originals.

*Standard on EPSON Expression 1640XL Pro

Key Features

- Optical 1600 x 3200dpi resolution A3+ (12.2"x17.2") scanner
- 42-bit internal and external, 3.6D maximum optical density
- EPSON Advanced Scanning Technologies
- Standard SCSI and USB interfaces
- Optional IEEE 1394 support
- EPSON TWAIN Pro/Network professional scanning software
- High quality software bundle including SilverFast Ai5 with IT-8 calibration - the professionals choice
- Simultaneous RGB scanning
- Zero standby - scanning starts when you start
- Auto Focus system for pinpoint accuracy up to 6mm from the flatbed
- Fast, full A3 document can be captured in less than a minute!
- Optional EPSON Network Image Express hardware scanner server for network integration
- Optional Transparency Unit* for scanning transparencies up to A3 size
- Optional 100 sheet Automatic Document Feeder
- 1 year On-Site warranty
- Optional 3 year CoverPlus extended warranty

*Standard on EPSON Expression 1640XL Pro



EPSON GT-10000+/Pro

Advanced, versatile business network scanner offering exceptional quality and speed

The EPSON GT-10000+ is the ideal scanner for business users requiring exceptional quality, A3 size and outstanding productivity. A maximum optical resolution of 600 x 2400dpi and 36-bit colour processing ensure accurate, consistent results, while excellent connectivity brings simple and effective integration into an office network.

Scanning flexibility

The GT-10000 provides a highly efficient solution to the capture of reports and presentations, the process of written documents and archiving of important notes and images.

Scanning simplicity

Thanks to the EPSON Start Button, the EPSON GT-10000+ makes high quality scanning a one-touch operation. With a single press, the relevant application is launched and the scanned image imported automatically to the user's computer. This is also the case for networked users, who can set scanning parameters from their desktop and be sent the scanned image directly.

Total control

EPSON's TWAIN Pro driver offers functions including multi-marquee, scan to fit, highlight and shadow adjustment, special effects and even 'live' previews of the final scan. And for extra peace of mind, 'target lock' delivery keeps sensitive documents safely on track.

Simple connectivity, comprehensive networking

Twin SCSI interfaces and optional IEEE 1394 connectivity enable rapid data transfer, while easy-to-install EPSON TWAIN Pro Network and Scan Server software bring the scanner's extensive capabilities to networked users. In fact, thanks to the new optional EPSON Network Image Express hardware scanner server, it is no longer necessary for the network to include a PC to host the Scan Server software.

Optional Automatic Document Feeder

To make light work of bigger jobs, the optional 100 sheet Automatic Document Feeder* enables full A3 sheet feeding with duplex capabilities at up to 10 pages per minute.

**Standard on EPSON GT-10000+ Pro*



Simple one touch operation with EPSON Start Button

Key Features

- High speed A3, 36-bit colour scanner
- Maximum optical resolution 600 x 2400dpi with EPSON Micro Step Drive
- EPSON Start Button for one-touch scanning
- Network scanning software with EPSON TWAIN Pro Network and EPSON ScanServer
- Twin standard SCSI interfaces
- Optional IEEE 1394 support
- Optional 100 sheet Automatic Document Feeder*
- Optional EPSON Network Image Express hardware scanner server for simple network integration
- Comprehensive Windows support
- Xenon gas fluorescent lamp for instant starting
- 1 year On-Site warranty
- Optional 3 year CoverPlus extended warranty

**Standard on EPSON GT-10000+ Pro*



EPSON GT-10000+ PRO

BUNDLED SOFTWARE: (Windows versions only)

TextBridge Pro

Adobe® PhotoDeluxe Business Edition

Presto! PageManager

EPSON TWAIN Pro Driver

EPSON TWAIN Pro Network and Scan Server



EPSON GT-30000

The ultimate high volume, high speed A3 colour document scanner

The EPSON GT-30000 scanner makes space-efficient document warehousing a simple task, enabling high volume scanning to be carried out at up to 30ppm – at the touch of a button. The latest TWAIN HS software, a 100-page duplexing Automatic Document Feeder, network connectivity and an ISIS driver for true industry standard support all combine to create the first choice for comprehensive document processing.

High speed document scanning

The EPSON GT-30000 is a dedicated high throughput scanner designed to provide the performance required by businesses looking to change from paper-based filing to space-efficient virtual archives. Unprecedented speeds are achieved for mono materials, but with 36-bit internal full colour capabilities, this scanner also accommodates the increasing importance of colour materials such as PowerPoint presentations or pdfs which are a combination of black and white and colour elements. Also, Auto Document Sizing means that the scanner will automatically work out the document size and adjust the settings accordingly – up to A3 size.

No compromise in quality

Although high speed is crucial in archiving applications, EPSON's scanning technologies ensure that quality remains superb, utilising superior document management processing to ensure optimum results even during complex jobs such as duplexing. In addition, EPSON adjustable dpi provides the flexibility to maximise productivity by setting different levels of resolution and, for example, calling on EPSON's advanced colour processing for higher resolution photo scans.

Advanced Network connectivity, essential compatibility

A development of EPSON's outstanding TWAIN Pro software, EPSON TWAIN HS offers even greater network performance for multiple users. What's more, the inclusion of an ISIS (Image and Scanner Interface Specification) driver ensures complete compatibility with industry standard document processing software. With standard narrow and wide SCSI interfaces and optional IEEE-1394 FireWire support, the EPSON GT-30000 can be connected to virtually every PC.



Optional IEEE-1394 FireWire interface

Duplexing Automatic Document Feeder

The duplexing capabilities of the EPSON GT-30000 also set this scanner ahead of the competition. With a capacity of up to 100 sheets, the standard ADF positions this as one of the very few scanners capable of high-speed, high quality archiving of double-sided mono or colour documents.



Key Features

- Scans in colour, and in black and white up to A3 size
- 30ppm A4 black and white at 300dpi (A4 landscape)
- 15ppm A4 colour at 300dpi (A4 landscape)
- 100 page duplexing ADF as standard
- 36-bit internal scanning
- Networkable using standard TWAIN HS Network software
- Comprehensive Windows support
- Xenon gas fluorescent lamp for instant starting
- 1 x 50-pin and 1 x 68-pin high density SCSI connectors for improved connectivity
- Quick Start scanning button
- Optional EPSON Network Image Express hardware scanner server for simple network integration
- Optional IEEE-1394 interface EPSON Twain HS



Specifications

| Model: | Perfection 640U | Perfection 1240U | Perfection 1240U PHOTO | Perfection 1640SU | Perfection 1640SU PHOTO |
|---------------------------------------------------------------------------------------------------------------------------------------|---------------------------------|---------------------------------|---------------------------------|---------------------------------|---------------------------------|
| Part Number: | B125042DA | B124042DA | B124112DA | B126052DA | B126142DA |
| Characteristics | A4 Flatbed colour image scanner | A4 Flatbed colour image scanner | A4 Flatbed colour image scanner | A4 Flatbed colour image scanner | A4 Flatbed colour image scanner |
| EPSON QuickStart button | 3 – Start, Copy, Scan | 3 – Start, Copy, Scan | 3 – Start, Copy, Scan | 1 – Start button | 1 – Start button |
| Scanning | Single Pass | Single Pass | Single Pass | Single Pass | Single Pass |
| Voltage | 100 - 240V | 100 - 240V | 100 - 240V | 100 - 240V | 100 - 240V |
| Frequency | 50 - 60Hz | 50 - 60Hz | 50 - 60Hz | 50 - 60Hz | 50 - 60Hz |
| Maximum Power Consumption | 17W | 20W | 20W | 25W | 25W |
| Scanning Resolution | | | | | |
| Scanner resolution/dpi | 600 x 2400 | 1200 x 2400 | 1200 x 2400 | 1600 x 3200 | 1600 x 3200 |
| Max output resolution/dpi | 9600 | 9600 | 9600 | 12800 | 12800 |
| Bits per pixel in colour | 36/24 bits | 42/42 bits | 42/42 bits | 42/42 bits | 42/42 bits |
| Bits per pixel in black | 12/8 bits | 14/14 bits | 14/14 bits | 14/14 bits | 14/14 bits |
| Optical density | X | 3.2 D | 3.2 D | 3.2 D | 3.2 D |
| Zoom | X | ■ 50-200% (1% increments) | ■ 50-200% (1% increments) | ■ 50-200% (1% increments) | ■ 50-200% (1% increments) |
| Image Corrections | | | | | |
| T.E.T | X | ■ | ■ | ■ | ■ |
| A.A.S. | X | ■ | ■ | ■ | ■ |
| De-screening | ■ | ■ | ■ | ■ | ■ |
| Colour Smoothing | ■ | ■ | ■ | ■ | ■ |
| Drop Out | X | ■ | ■ | ■ | ■ |
| Sharpness, Exposure, Gamma, Threshold, Colour filter, High light and Shadow, Grey balance, Saturation, Tone correction, Un-sharp Mask | ■ | ■ | ■ | ■ | ■ |
| Gamma Correction | | | | | |
| CRT Display A 1.0 | X | ■ | ■ | ■ | ■ |
| CRT Display B 1.2 | X | ■ | ■ | ■ | ■ |
| Printer A/Impact 1.3 | X | ■ | ■ | ■ | ■ |
| Printer B/Laser, Ink, Thermal 2.4 | X | ■ | ■ | ■ | ■ |
| Printer C/High Contrast Printer 3.5 | X | ■ | ■ | ■ | ■ |
| User Defined Value | ■ | ■ | ■ | ■ | ■ |
| Halftoning/Dithering | | | | | |
| Error Diffusion (A, B, C) | X | ■ | ■ | ■ | ■ |
| Dither (A, B, C, D) | X | ■ | ■ | ■ | ■ |
| User defined Dither Patterns (A, B) | X | ■ | ■ | ■ | ■ |
| Standard Interfaces | USB | USB | USB | USB & SCSI | USB & SCSI |
| Max scanning area | 216 x 297mm | 216 x 297mm | 216 x 297mm | 216 x 297mm | 216 x 297mm |
| Driver | | | | | |
| Twain Driver for PC or MAC platform | EPSON TWAIN L | EPSON TWAIN 5 | EPSON TWAIN 5 | EPSON TWAIN 5 | EPSON TWAIN 5 |
| Batch scanning feature | X | ■ | ■ | ■ | ■ |
| Negative scanning feature (Transparency Unit required) | X | □ | ■ | □ | ■ |
| Auto locate | ■ | ■ | ■ | ■ | ■ |
| Auto exposure feature | ■ | ■ | ■ | ■ | ■ |
| Document Type Recognition | ■ | ■ | ■ | ■ | ■ |
| Auto Skew Correction | ■ | ■ | ■ | ■ | ■ |
| Windows ICM | ■ | ■ | ■ | ■ | ■ |
| Macintosh ColorSync | ■ | ■ | ■ | ■ | ■ |
| Focus Adjustment | X | X | X | X | X |
| Multiple marquee scan | ■ | ■ | ■ | ■ | ■ |
| Network Scanning | X | X | X | X | X |
| Reliability | 30,000 cycles | 30,000 cycles | 30,000 cycles | 30,000 cycles | 30,000 cycles |
| Dimensions | | | | | |
| H x W x D (mm) | 93 x 269 x 435mm | 93 x 269 x 435mm | 93 x 269 x 435mm | 96 x 289 x 442mm | 96 x 289 x 442mm |
| Weight/Kg | 2.8Kg | 2.8Kg | 2.8Kg | 4.5Kg | 4.5Kg |
| Options | | | | | |
| Automatic Document Feeder | X | X | X | □ | □ |
| A3 Duplexing Automatic Document Feeder | X | X | X | X | X |
| Transparency Unit/Film Adapter | X | □ | ■ | □ | ■ |
| IEEE1394 Firewire Interface | X | X | X | X | X |
| EPSON Network Image Express | X | X | X | X | X |

■ Standard □ Optional X Not available

Minimum operating system requirements

| Product/ Operating System | Windows 95 | Windows 98/ME | Windows NT 4.0 | Windows 2000 | Mac PowerPC *1 | iMac™ *2 | G3 + G4 *1 |
|------------------------------|------------|---------------|----------------|--------------|----------------|----------|------------|
| Perfection 640U | | Yes | | Yes | Yes | Yes | Yes |
| Perfection 1240U | | Yes | | Yes | Yes | Yes | Yes |
| Perfection 1240U PHOTO | | Yes | | Yes | Yes | Yes | Yes |
| Perfection 1640SU | Yes (SCSI) | Yes | Yes (SCSI) | Yes | Yes | Yes | Yes |
| Perfection 1640SU OFFICE | Yes (SCSI) | Yes | Yes (SCSI) | Yes | Yes | Yes | Yes |
| Perfection 1640SU PHOTO | Yes (SCSI) | Yes | Yes (SCSI) | Yes | Yes | Yes | Yes |
| Expression 1680 | Yes (SCSI) | Yes | Yes (SCSI) | Yes | Yes | Yes | Yes |
| Expression 1680PRO | Yes (SCSI) | Yes | Yes (SCSI) | Yes | Yes | Yes | Yes |
| Expression 1640XL | Yes (SCSI) | Yes | Yes (SCSI) | Yes | Yes | Yes | Yes |
| GT-10000+ | Yes (SCSI) | Yes | Yes (SCSI) | Yes | No | No | No |
| GT-30000 | Yes (SCSI) | Yes | Yes (SCSI) | Yes | No | No | No |

