

# Combining the best technologies to ensure that every detail in your presentation is expressed with vivid brilliance

## Multimedia Projector

# EMP-755 EMP-750

Packing the best in Epson's smallest projectors that won't burden you with its weight or price



Light and portable



Single-Foot Release Lever



PC-less Presentation



### Powerful and Compact, Easy to Use

2000 ANSI lm of Brightness in 1.7kg (3.8 lbs) EMP-755/750 deliver up to 2000 ANSI lm of brightness and weigh just 1.7 kg (3.8 lbs.)\*. With its brightness and lightweight, Epson is widening the gap between EMP-755/750 and other projectors.

\* EMP-750's weight is 1.7 kg (3.8 lbs)  
EMP-755's weight is 1.8 kg (3.9 lbs)

### Soft, Bright, Beautiful...3LCD Technology



3LCD projector

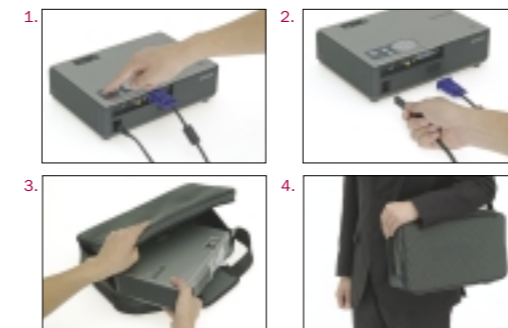


1-chip DLP™ projector

3LCD technology achieves brighter, more natural images and smoother, sharper video playback. No color break-up makes images gentler on the eyes.

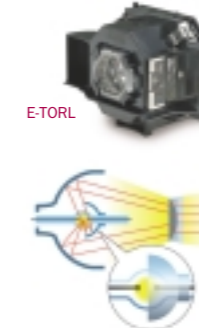
DLP™(Digital Light Processing™) is a trademark of Texas Instruments Incorporated.

### "Instant off" Quick Shutdown



Simply press the power-off button and you can unplug power cable immediately after beep sounds.

### Compact and Bright – Epson's Innovative New E-TORL Lamp



(E-TORL : Epson-Twin Optimize Reflection Lamp) Epson's recently developed small, high performance "E-TORL" lamps efficiently gather and project light to effectively eliminate light-leakage and minimize light diffraction. This system combines an ellipsoidal reflector with an aspherical lens and a hemispherical mirror to produce a lamp so small and highly efficient.

### Auto Keystone Correction



Auto Keystone Correction automatically detects the projector's vertical angle with  $\pm 30^\circ$  and adjusts the vertical keystone distortion instantly.

### Security Functions

Power-On Protect / User's Logo Protect / Timer Protect / Key Lock

With 3 passwords protect functions and key lock functionality, the EMP-755 / 750 have your security concerns covered. So, regardless of theft or mischief, your projector is protected with these innovative security functions.

### 6 Selectable Projection Modes

With 6 presentation modes to choose from, these preset settings allow you to select the mode that's best suits your viewing environment.

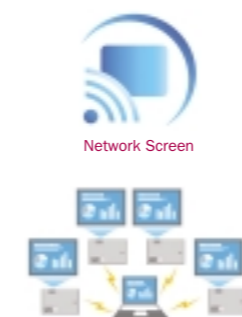
Mode Selection: Dynamic, Presentation, Living Room, Theatre, Blackboard, RGB

### Single-Foot Release Lever



The well-balanced single-foot has an easily accessible release lever which allows the user to adjust the projection level with just one hand.

### Intelligent Wireless Connection – EasyMP\*



\*For EMP-755 only.

#### High-speed "Network Screen"

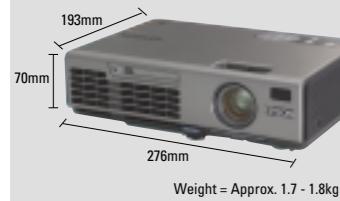
EMP-755 can receive images transmitted from a PC by radio waves for quick projection. Intelligent presentations can be made from anywhere in the room without being restricted by cables. What is more, it is compatible with Mac OS X 10.3 so you can make wireless presentations using Apple's Keynote™ presentation software.

### PC-less Presentation\*



Connect a memory device containing your pictures and movies or presentations to the USB terminal or the PC card slot and start projecting. So even without your PC, you can have smooth projection of top quality still images and MPEG2 movie files that will mesmerize your audiences.

MULTIMEDIA PROJECTOR  
EMP-755  
EMP-750



# Specifications

**EPSON**  
EXCEED YOUR VISION

**INDIA**  
Epson India Pvt Ltd  
Tel: (91) 080-3051-5000  
Fax: (91) 080-3051-5005  
www.epson.co.in

**INDONESIA**  
PT Epson Indonesia  
Tel: (62) 021-572-3161  
Fax: (62) 021-572-4357  
www.epson.co.id

**MALAYSIA**  
Epson Trading (M) Sdn Bhd  
Tel: (60) 03-5628-8288  
Fax: (60) 03-5628-8388  
www.epson.com.my

**PHILIPPINES**  
Epson Philippines Corporation  
Tel: (63) 02-813-6567  
Fax: (63) 02-811-1163  
www.epson.com.ph

**SINGAPORE**  
Epson Singapore Pte Ltd  
Tel: (65) 6337-7911  
Fax: (65) 6334-2716  
www.epson.com.sg

**THAILAND / INDOCHINA**  
Epson (Thailand) Co., Ltd  
Tel: (66) 02-670-0680  
Fax: (66) 02-670-0688  
www.epson.co.th

All products and brand names herein are for identification purpose only and may be the trademarks or registered trademarks of their respective owners. Epson disclaims any and all rights in those marks. All images are simulated in this brochure. Specifications are subject to change without prior notice.

www.epson.com.sg

	EMP-755	EMP-750																								
<b>Projection System</b>	RGB Liquid-Crystal Shutter Projection System																									
<b>Part Number</b>	V11H200052	V11H201052																								
<b>Specification of Main Parts</b>	<table border="1"> <tr> <td>LCD</td> <td>Size</td> <td>0.7 inch with MLA (x 3)</td> </tr> <tr> <td></td> <td>Driving Method</td> <td>Polysilicon TFT Active Matrix</td> </tr> <tr> <td></td> <td>Pixel Number</td> <td>786432 dots (1024 x 768) x 3</td> </tr> <tr> <td></td> <td>Native Resolution</td> <td>XGA</td> </tr> <tr> <td>Projection Lens</td> <td>Manual Focus &amp; 1.2 x Optical Zoom</td> <td></td> </tr> <tr> <td></td> <td>F=1.58-1.76 / f=23.7-28.5 mm</td> <td></td> </tr> <tr> <td>Lamp</td> <td>Type</td> <td>170 W UHE</td> </tr> <tr> <td></td> <td>Life</td> <td>2000 hours (High Brightness mode) / 3000 hours (Low Brightness mode)</td> </tr> </table>		LCD	Size	0.7 inch with MLA (x 3)		Driving Method	Polysilicon TFT Active Matrix		Pixel Number	786432 dots (1024 x 768) x 3		Native Resolution	XGA	Projection Lens	Manual Focus & 1.2 x Optical Zoom			F=1.58-1.76 / f=23.7-28.5 mm		Lamp	Type	170 W UHE		Life	2000 hours (High Brightness mode) / 3000 hours (Low Brightness mode)
LCD	Size	0.7 inch with MLA (x 3)																								
	Driving Method	Polysilicon TFT Active Matrix																								
	Pixel Number	786432 dots (1024 x 768) x 3																								
	Native Resolution	XGA																								
Projection Lens	Manual Focus & 1.2 x Optical Zoom																									
	F=1.58-1.76 / f=23.7-28.5 mm																									
Lamp	Type	170 W UHE																								
	Life	2000 hours (High Brightness mode) / 3000 hours (Low Brightness mode)																								
<b>Screen Size (Projected Distance)</b>	30 to 300 inch (1.0 to 12.1 m)																									
<b>Brightness</b>	High / Low Brightness Mode 2000 ANSI lm / 1500 ANSI lm																									
<b>Contrast</b>	400:1																									
<b>Color Reproduction</b>	Full-Color (16.77 million colors)																									
<b>Sound Output</b>	1 W Monaural																									
<b>Effective Scanning</b>	Pixel Clock	13.5 MHz to 162 MHz																								
<b>Frequency Range</b>	Horizontal	15 KHz to 92 KHz																								
<b>(Analog)</b>	Vertical	50 Hz to 85 Hz																								
<b>Auto Keystone Correction</b>	Vertical : -30 to +30 degrees																									
<b>Analog RGB I/O</b>	Display Performance	Native 1024 x 768 dots																								
	Resize	1600 x 1200 / 1280 x 1024 / 800 x 600 / 640 x 480																								
	Input Terminal	Video D-sub 15-pin x 1																								
<b>Video I/O</b>	Input Signal	Video Standard NTSC / NTSC4.43 / PAL / M-PAL / N-PAL / PAL60 / SECAM																								
	Input Terminal	Video Composite Video: RCA (Yellow) x 1 S-Video: Mini DIN x 1 Component Video: D-sub 15-pin Video-RGB: D-sub 15-pin																								
<b>Audio I/O</b>	Audio Terminal	Stereo mini-jack x 1																								
	Audio In or Out	Audio In Only																								
<b>Control I/O</b>	USB I/O Terminal	Type B x 1 (for mouse, K/B control)																								
	Card Slot	Type A x 1 (for USB memory, DSC) PCMCIA Type I/II X 1																								
<b>Operating Temperature</b>	5°C to 35°C <41°F to 95°F>																									
<b>Start-Up Period</b>	About 7 sec.																									
<b>Cool-Down Period</b>	Instant off																									
<b>Power Supply Voltage</b>	100 - 240 VAC ± 10%, 50 / 60 Hz																									
<b>Power Consumption</b>	100 - 240VAC 50 / 60Hz 2.7 - 1.1A																									
<b>Dimension (D x W x H)</b>	193 x 276 x 70 mm (Excludes Feet)																									
<b>Weight</b>	Approx. 3.9 lbs. /1.8 kg	Approx. 3.8 lbs. /1.7 kg																								
<b>Fan Noise</b>	35 dB (Low Brightness mode)																									

## Supplied Accessories

Power Cable	1.8 m
Computer Cable	1.8 m
USB Cable	1.8 m USB A / USB B
Remote Control	With AAA type alkaline batteries X 2 pcs
Audio Adapter	3.5 mm stereo miniplug (male) <-> RCA jack x 2 (female) 15 cm
Soft carrying case	
Password Protect sticker	
EasyMP software (CD-ROM)*	* only EMP-755
Wireless LAN card** 802.11 g / b	** only EMP-755 Attached
Owner's manual	

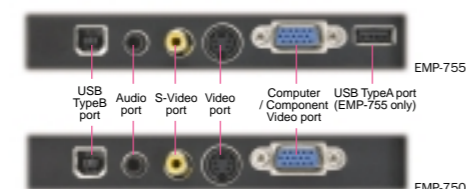
## Optional Accessories

ELPLP32	Replacement Lamp
ELPAF08	Air Filter Set, 2 sheets

## Interface

EMP-755 (EasyMP)	Functions:	Projector control and projector management via network E-mail notification SNMP Web Control Network Screen Card Player: PC-less presentation, MPEG Player*from PCMCIA and USB Type A (USB 1.1)
	Software:	EMP Monitor (for Windows®) EMP NS Connection (for Windows® and Machintosh®) EMP SlideMaker2 (for Windows®) *MPEG Player: Supports playback of MPEG-2 only

## Connector Panel



## Projection Distance

Diagonal Screen Size (inches)	Wide (cm)	Tele (cm)
30	100	120
40	130	160
60	200	240
80	270	320
100	340	400
150	500	600
200	670	810
300	1010	1210



Multimedia Projector

**EMP-755**  
**EMP-750**

**RACE THROUGH  
AND LIGHTEN  
THE WORKLOAD**

