

you
+
hp



HP Color LaserJet 2550 printer series

Affordable laser colour

Produce professional colour business documents in-house with this affordable desktop colour laser printer.

Space-saving and easy-to-use

Fits any workplace. Easy access and installation of consumables through single front panel.

More compatibility

Built-in HP PCL 6 and Adobe Postscript 3[®] emulation for consistent professional results and reliable network printing.

HP reliability

HP is the only printer vendor to receive an 'A' rating for 12 consecutive years and an 'A+' in the last two years in PC Magazine's Service and Reliability award.

Impressive colour,
remarkably affordable





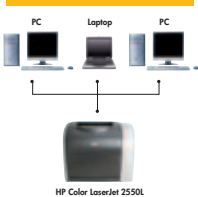
HP Color LaserJet 2550 printer series

Enjoy high-impact colour at an affordable price with this simple-to-use, compact desktop colour laser printer. Perfect for small businesses.

HP reliability



August 5, 2003
OVERALL PRINTERS
Hewlett-Packard Company



Cost effective for small workgroup networking¹

HP Color LaserJet 2550L

Replace print cartridges easily



Control panel conveniently lets you check printer status



Cost effective and simple networking

- Get easy and cost-effective small workgroup sharing through internal HP Jetdirect¹ networking or optional HP Jetdirect external print servers.

Easy connectivity

- Choose the connection best suited to your business needs with Hi-Speed USB 2.0 and 1284-B parallel ports.

Versatile compatibility

- Built-in HP PCL 6 and Adobe PostScript[®] level 3 emulation driver for professional and dependable network printing.
- Compatible with a wide variety of Windows[®] and Macintosh operating systems².

Simple supplies access and monitoring

- Front panel access to the print cartridges. Depleted print cartridges automatically rotate to the top of carousel for easy replacement.

Check printer status at a glance

- The front control panel conveniently lets you check printer supplies and status at a glance.

¹ Internal HP Jetdirect 10/100 Ethernet networking included on 2550Ln and 2550n models only.

² Windows NT4 support for print driver only.



Impressive business-quality documents and images

- Print quality colour documents and brochures with new fuser technology and HP ImageREt 2400 Resolution Enhancement technology.

Handle complex print jobs efficiently

- On-board 264 MHz processor, 64 MB of RAM (expandable to 192 MB) handles complex print jobs fast and effectively.
- Robust 30,000-page monthly duty cycle gives you great durability and reliability.

Improve your business productivity

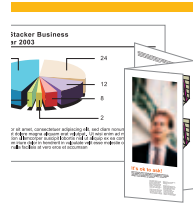
- Get print speeds of up to 4 ppm¹ colour and up to 20 ppm (letter)/19 ppm¹ (A4) black.
- Instant-on Technology ensures a fast first-page-out, even when the printer has been in Powersave mode.

Flexible media handling

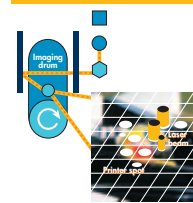
- Versatile paper-handling features include a 125-sheet multipurpose tray and optional high capacity 250 and 500-sheet input trays². Handle custom and thick-media jobs using the convenient straight-through paper path.

¹ At 5% average page coverage.

² 125-sheet multipurpose tray standard on all models, 250-sheet input tray optional on all models except 2550n, 500-sheet input tray optional on all models.



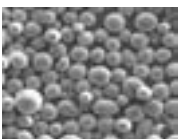
Create your own professional marketing and business collateral



Vivid colour and sharp text with HP ImageREt 2400



Get the details with advanced edge enhancement and trapping



HP chemically grown toner particles fuses quickly to the paper to produce vivid hues and sharper text with impressive results.

HP original LaserJet print cartridge. The science behind brilliant printing.

High tech, high performance

70% of HP LaserJet printing technology is in the cartridge. Smaller, more uniformly shaped HP colour toner particles deliver richer, sharper colours and more even tones, so your documents always look their best.

Unmatched reliability

Painstakingly engineered and tested to work perfectly with HP LaserJet printers, you get reliable, consistent print results and peace of mind with HP original LaserJet print cartridges.

Smart management

Access real-time toner usage data stored in the cartridge with HP Smart printing technology and make better purchase decisions.

HP Color LaserJet 2550 printer series

Technical specifications

Print speed¹	Black: up to 20 ppm (letter)/19 ppm (A4); Colour: up to 4 ppm
First page out	Approximately 18 seconds black, 29 seconds colour
Resolution	600 x 600 dpi with HP ImageREt 2400
Processor	264 MHz Motorola CFV4e
Memory	64 MB built-in SDRAM; expandable to 192 MB with one open, industry-standard, 100-pin SDRAM DIMM slot
Duty cycle	30,000 pages per month
Media	
Media handling	2550L/2550Ln: 125-sheet multipurpose tray 2550n: 125-sheet multipurpose tray, 250-sheet input tray
Output	125 sheet face down bin, rear output door for special media
Sizes	Tray 1: 3 x 5 inches to 8.5 x 14 inches (76.2 x 127 mm to 216 x 356 mm); Tray 2: 5.8 x 8.3 inches to 8.5 x 14 inches (176 x 250 mm to 216 x 356 mm)
Weights	Tray 1: 16 to 47 lb (60 to 177 g/m ²); Tray 2: 16 to 28 lb (60 to 105 g/m ²)
Types	Paper (plain, letterhead, prepunched, bond, colour, rough, prep-rinked, recycled), HP Glossy Media, HP Cover Paper, HP Color LaserJet Transparencies, labels, envelopes and card stock
Connectivity	
Interfaces	2550L: Hi-Speed USB 2.0 port, IEEE 1284-B compliant parallel port 2550Ln/2550n: Hi-Speed USB 2.0 port, IEEE 1284-B compliant parallel port, built-in HP Jeldirect 10/100Base-TX Ethernet/Fast Ethernet print server
Languages and fonts	HP PCL 6 and HP postscript level 3 emulation with automatic language switching; 80 TrueType™ internal scalable PCL 6 fonts; 80 TrueType internal scalable HP postscript fonts
Clients operating systems	Microsoft Windows 98, 2000, Me, XP, NT 4.0 (driver only, other printer software is not available); Mac OS 9.1, X v.10.1 and later; UNIX*, Linux and OS/2 (limited functionality)
Networkwork operating systems	Microsoft Windows 98, Me, 2000, XP, NT 4.0; Mac OS 9.x, OS X
Networkwork protocols supported	2550L/2550n: TCP/IP (IP Direct Mode, LPD), Apple Rendezvous (mDNS), Telnet, SLP, IGMP, BOOT/DHCP, WINS, SNMP v1 and v2c, HTTP
Dimensions (h x d x w)	2550L/2550Ln: 12.8 x 17.8 x 18.9 inches (325 x 452 x 482 mm) 2550n: 14.8 x 17.8 x 18.9 inches (376 x 452 x 482 mm)
Weight	2550L: 47.9 lb (21.7 Kg) 2550n: 48 lb (21.8 Kg) 2550n: 53.5 lb (24.2 Kg)
Operating environment	Operating temperature: 59 to 90.5° F (15 to 32.5° C) Recommended temperature: 68 to 81° F (20 to 27° C) Storage temperature: -4 to 104° F (-20 to 40° C) Relative humidity: 20 to 70 percent, non-condensing
Acoustics	Sound power: Printing: LwAm 6.6 B(A), Standby: 0 Operator sound pressure: Printing: LpAm 62 dB(A), Standby: 0 Bystander sound pressure: Printing: LpAm 52 dB(A), Standby: 0
Power specifications²	110-volt models: 110 to 127 V (± 10 percent), 60 Hz (± 3 Hz); 220-volt models: 220 to 240 V (± 10 percent), 50 Hz (± 3 Hz)
Power consumption	2550L 2550Ln 2550n Printing: 368 watts 381 watts 378 watts Standby: 17 watts 18 watts 19 watts Off: <1 watt <1 watt <1 watt Energy Star® compliant
Warranty	One year, limited hardware, return to authorized service center warranty with phone and Web support

¹ Exact speed varies depending on the system configuration, software application, driver and document complexity.

² Power requirements are based on the country/region where the printer is sold. Do not convert operating voltages. This will damage the printer and void the product warranty.

For more information, call your local HP resellers worldwide.

Australia 132347; China +86 21 2898 2255; Hong Kong +852 800 938 833; India +9628 123 123 (Del/Mum/Blr), +1600 444 999 (other cities); Indonesia +0800 1111 222; Korea +080 703 0700; Malaysia +1800 88 4848; New Zealand +0800 733 547; Philippines +1800 1331 4488; Singapore +1800 278 8100; Taiwan +0800 236 686; Thailand +662 353 9000; Vietnam +848 823 6215

For the following countries, please fax your queries to: +65 6 275 6707
• Bangladesh • Brunei • Cambodia • Pakistan • Sri Lanka

Ordering information

Number	Description
Q3702A	HP Color LaserJet 2550L printer
Q3703A	HP Color LaserJet 2550Ln printer
Q3704A	HP Color LaserJet 2550n printer
Paper handling	
Q3709A	250-sheet input tray
Q3710A	500-sheet input tray
HP Smart printing supplies³	
Q3960A	HP LaserJet 5,000-page black print cartridge
Q3961A	HP LaserJet 4,000-page cyan print cartridge
Q3962A	HP LaserJet 4,000-page yellow print cartridge
Q3963A	HP LaserJet 4,000-page magenta print cartridge
Q3971A	HP LaserJet 2,000-page cyan print cartridge
Q3972A	HP LaserJet 2,000-page yellow print cartridge
Q3973A	HP LaserJet 2,000-page magenta print cartridge
Q3964A	HP LaserJet imaging drum, 20,000 pages black, 5,000 pages colour (average 10,000 – 12,000 pages)
Memory	
C9121A	128 MB SDRAM DIMM
C1887A	64 MB SDRAM DIMM
C7845A	32 MB SDRAM DIMM
Cables	
C2950A	IEEE 1284 cable (a-b) 2 metre
C2951A	IEEE 1284 cable (a-b) 3 metre
C6518A	USB cable (a-b) 2 metre
Print servers	
J3258B	HP Jeldirect 170x Ethernet, parallel connection
J6035C	HP Jeldirect 175x Ethernet/Fast Ethernet, USB connection
J3263A	HP Jeldirect 300x Ethernet/Fast Ethernet, parallel connection
J3265A	HP Jeldirect 500x Ethernet/Fast Ethernet, parallel connection
J7942A	HP Jeldirect en3700 Fast Ethernet, Hi-Speed USB 2.0 connection
J6061A	HP Jeldirect 380x 802.11b wireless, USB connection
Media	
Q1298B	HP LaserJet Tough Paper, A4-size, 50 sheets
Q6542A	HP LaserJet Soft Gloss Paper, A4-size, 200 sheets
C2936A	HP LaserJet Colour Transparencies, A4-size, 50 sheets
92296U	HP LaserJet Monochrome Transparencies, A4-size, 50 sheets
Q2397A*	HP Premium Choice LaserJet Paper, A4-size, 250 sheets
Q2407A*	HP Office Paper, A4-size, 500 sheets
Q2408A*	HP Office Paper, letter size, 500 sheets
Q2400A*	HP Everyday Paper, A4-size, 500 sheets
Q2398A*	HP Everyday Paper, letter size, 500 sheets
Q6550A	HP Laser Photo Paper, A4-size, matt, 100 sheets
Q6547A	HP Laser Photo Paper, A4-size, gloss, 200 sheets
Q6548A	HP Laser Photo Paper, A3-size, gloss, 200 sheets
Q6544A	HP Laser Paper, A4-size, matt, 150 sheets
Service and support	
U4929A	HP Care Pack 3 years next day exchange
U8019A	HP Care Pack 4 years next day exchange
U8020A	HP Care Pack 5 years next day exchange
U2893A	HP Care Pack 3 years next day hardware
U8017A	HP Care Pack 4 years next day
U8018A	HP Care Pack 5 years next day
U3794A	HP Care Pack 3 years, 4 hours 9 x 5
U2894A	HP Care Pack 3 years, 4 hours 13 x 5 hardware
U4930PA	HP Care Pack 1 year post warranty next day exchange
U2895PA	HP Care Pack 1 year post warranty next day
U4940PA	HP Care Pack 1 year post warranty, 4 hours 9 x 5
U3338PA	HP Care Pack 1 year post warranty, 4 hours 13 x 5

* All print cartridge page yields are at five percent page coverage.
* Available in selected Asia Pacific countries only.

For more information on
HP Care Pack, visit: <http://www.hp.com/apac/hpservices/carepack>
HP Instant Support Professional Edition (ISPE), visit:
<http://www.instant-support.asiapac.hp.com>
For more information on support, visit: <http://www.hp.com/support>
For more information on HP genuine parts, visit:
<http://www.hp.com/go/hpparts>
For specific warranty details, please check with your local country resellers.

For more information on
HP Care Pack, visit: <http://www.hp.com/apac/hpservices/carepack>
HP Instant Support Professional Edition (ISPE), visit:
<http://www.instant-support.asiapac.hp.com>
For more information on support, visit: <http://www.hp.com/support>
For more information on HP genuine parts, visit:
<http://www.hp.com/go/hpparts>
For specific warranty details, please check with your local country resellers.

For more information on
HP Care Pack, visit: <http://www.hp.com/apac/hpservices/carepack>
HP Instant Support Professional Edition (ISPE), visit:
<http://www.instant-support.asiapac.hp.com>
For more information on support, visit: <http://www.hp.com/support>
For more information on HP genuine parts, visit:
<http://www.hp.com/go/hpparts>
For specific warranty details, please check with your local country resellers.

For more information on
HP Care Pack, visit: <http://www.hp.com/apac/hpservices/carepack>
HP Instant Support Professional Edition (ISPE), visit:
<http://www.instant-support.asiapac.hp.com>
For more information on support, visit: <http://www.hp.com/support>
For more information on HP genuine parts, visit:
<http://www.hp.com/go/hpparts>
For specific warranty details, please check with your local country resellers.



© 2004 Hewlett-Packard Development Company, L.P.
The information contained herein is subject to change without notice. The only warranties for HP products and services are set forth in the express warranty statements accompanying such products and services. Nothing herein should be construed as constituting an additional warranty. HP shall not be liable for technical or editorial errors or omissions contained herein.