

HP Color LaserJet 5500 Series Printers

5500 • 5500n • 5500dn • 5500dtn • 5500hdn



An easy-to-use wide format color laser printer for general offices with the same speed as black and white.



Fast color

- **Meet the real-world performance requirements for high-resolution color with HP ImageREt 2400 technology for all your professional business documents.** Print color as fast as black and white with up to 21 pages per minute (letter-sized pages) with the high-performance, inline engine, 400 MHz processor, and up to 160 MB RAM standard for a fast, up to 18-second first page out.
- **Produce professional spreadsheets and other wide-format business documents.** Print media up to just over 12 x 18 inches.
- **Vibrant image quality makes your presentations stand out.** Achieve high-resolution color with HP ImageREt 2400 dpi technology and enjoy enhanced print quality with smoother color transitions, sharper black text and sharper images with the offset press technologies, such as adaptive half-toning and trapping.
- **Streamline your business workflow.** The printer's hard disk (standard on 5500hdn model) enables multiple original printing (mopying), secure printing and many other document management solutions.

Unmatched simplicity

- **HP makes maintenance and troubleshooting simple.** A graphical control panel, easy front access to the printer and clear labeling make print cartridge installation and troubleshooting practically as simple as for a monochrome HP LaserJet printer.

- **Reduce time spent refilling paper.** Additional 500-sheet paper trays (standard on some models, optional on others) bring input capacity to a maximum of 1,600 sheets for added media flexibility.
- **Trouble-free maintenance.** Simple paper path design and essentially only four supplies mean fewer and easier interventions.
- **Low cost of ownership and operation.** Long-life maintenance kits, HP Smart printing supplies¹ and low intervention rates keep costs down.

Robust networking

- **Best-in-class networking.** The robust HP Jetdirect Fast Ethernet internal print server provides trouble-free high-performance printer sharing.
- **Expandable HP Jetdirect networking options allow workgroups to prepare for mobile environments and to access e-services.** Add HP Jetdirect wireless 802.11b networking or other connectivity options with the open EIO slots.
- **Simple to manage over your network.** Management is easy using HP Web Jetadmin printer management software or via the embedded Web server.

¹ Using genuine HP supplies ensures availability of all HP printing features.



HP Color LaserJet 5500 Series

1. Graphical control panel for ease-of-use, HP Smart printing supplies¹ maintenance and convenience

2. Four high-capacity² all-in-one print cartridges (up to 13,000 pages black, up to 12,000 pages color)

3. Simple front door access allows you to easily change printer cartridges and perform routine maintenance

4. Convenient printer stand (standard on the 5500dtn and 5500hdn models)

5. 100-sheet multipurpose tray

6. 500-sheet feeder tray

7. Two additional 500-sheet trays for media capacity of 1,600 sheets (standard on the 5500hdn model)

HP Jetdirect Fast Ethernet EIO internal print server

Fast color printing—up to 21 ppm and 18-second first page out

Automatic duplexer unit for two-sided color printing—full-color, two-sided brochures print easily

Prints on a wide variety of media types and sizes—up to 12 x 18 inch widths for 11 x 17 inch full bleed prints

¹ Using genuine HP supplies ensures availability of all HP printing features.

² Based on 5% average paper coverage.



HP Color LaserJet 5500hdn model shown

Series at a glance



HP Color LaserJet 5500

- 400 MHz processor
 - 96 MB RAM (expandable to 416 MB)
 - 100-sheet multipurpose tray
 - 500-sheet feeder tray (media capacity 600 sheets)
- Includes three open EIO slots



HP Color LaserJet 5500n

- All of the features of the 5500 model plus:
- HP Jetdirect Fast Ethernet EIO internal print server
- Includes two open EIO slots



HP Color LaserJet 5500dn

- All of the features of the 5500n model plus:
- Automatic duplexer unit
- Includes two open EIO slots



HP Color LaserJet 5500dtn

- All of the features of the 5500dn model plus:
- 160 MB RAM (expandable to 416 MB)
 - Second 500-sheet feeder tray (media capacity 1,100 sheets) and printer stand
- Includes two open EIO slots



HP Color LaserJet 5500hdn

- All of the features of the 5500dtn model plus:
- Hard disk drive—facilitates fast multiple-original processing and storing of templates and forms
 - Third 500-sheet feeder tray (media capacity 1,600 sheets)
- Includes one open EIO slot

Get ultimate flexibility with this easy-to-use, 11 x 17 color laser printer for the general office.

High-performance color printing

Whether printing brochures or spreadsheets, newsletters or business presentations, with the HP Color LaserJet 5500 series printers you are guaranteed high-quality documents while meeting all your time-critical deadlines through in-house printing. Featuring inline printing technology—using a “direct-to-page process”—the HP Color LaserJet 5500 printers transfer toner directly to your media ensuring exceptional print quality and color printing at the same speed as black. And with best-in-class HP Jetdirect wired and wireless print servers, the printers can be placed anywhere in networked offices so that entire workgroups can access fast, wide-format color printing.

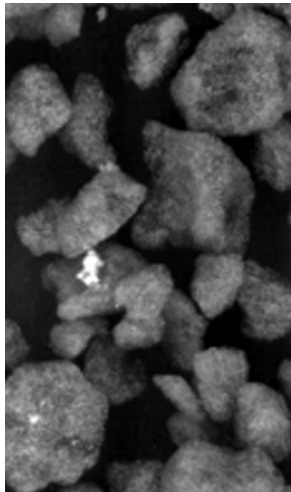
Exceptional color output quality

HP has designed the HP Color LaserJet 5500 printers and HP Smart printing supplies¹ so that whether you are sending RGB or CMYK files, the printer is automated and configured to supply:

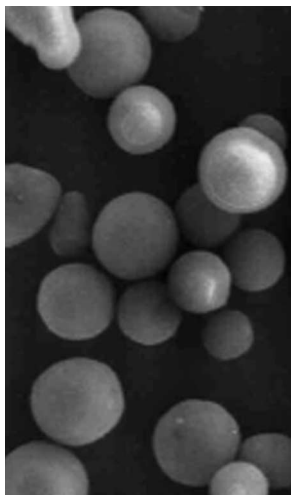
- Image detail
 - 8 bit vs. 1–2 bit Contone
 - HP’s technology—four times the data delivers superior detail
- Color mapping
 - Family similarity
- Print consistency
 - By product design, closed loop controls and HP Smart printing supplies¹
- Sharp color transitions
 - Trapping
- Sharp text and lines
 - Adaptive halftoning

Advanced toner technology

- All-in-one print cartridge
- Chemically-grown toner
- Uniform and small toner particles that enable the best print quality
- Integrated release agent to enable “oil-less” fusing
- Cost efficient



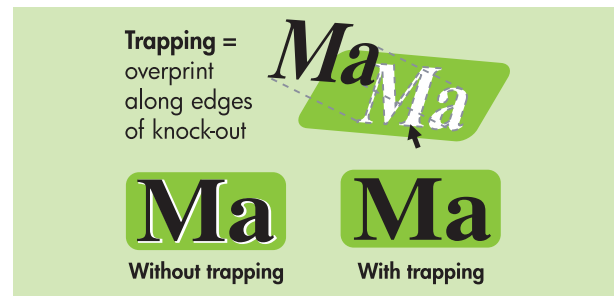
Ground toner



Chemically-grown toner

Precise adjacent colors—trapping

- Eliminates color plane misregistration
- Eliminates transitions between halftones
- Automatic color plane registration
- Automatic corrections built-in



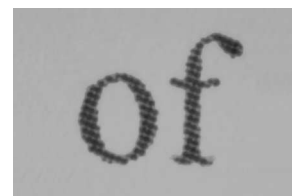
Smart edge enhancement (adaptive halftoning)

- Extends beyond solids to light colored text
- Dynamic algorithm identifies edges and applies special halftoning to sharpen edges.

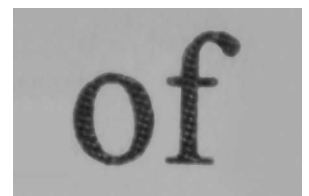
Smart operation made easy

The HP Color LaserJet 5500 series printers are designed to operate both efficiently and intuitively.

- Control panel displays text and animated graphics simultaneously with an intuitive user interface.
- Front panel provides convenient access to the end user-replaceable supplies.
- Virtually eliminates printer downtime with genuine HP Smart printing supplies¹ that enable status monitoring, proactive alert messages, Internet-enabled supplies ordering and convenient remote troubleshooting



No edge enhancement



Smart edge enhancement (Adaptive halftoning)

¹ Using genuine HP supplies ensures availability of all HP printing features.

HP Color LaserJet 5500 Series Printers

Technical specifications	HP Color LaserJet 5500 (Product number: C9656A)	HP Color LaserJet 5500n (Product number: C7131A)	HP Color LaserJet 5500dn (Product number: C9657A)	HP Color LaserJet 5500dtn (Product number: C9658A)	HP Color LaserJet 5500hdn (Product number: C9659A)	
Print speed³	Up to 21 ppm, letter-size documents					
First page out	18 seconds					
Processor	400 MHz					
Memory	96 MB standard, expandable to 416 MB		160 MB standard, expandable to 416 MB			
Duty cycle, monthly	120,000 pages per month					
Media	Paper trays, standard					
	100-sheet multipurpose, 500-sheet feeder	100-sheet multipurpose, 500-sheet feeder, automatic duplex unit	100-sheet multipurpose, two 500-sheet feeder trays, automatic duplex unit	100-sheet multipurpose, three 500-sheet feeder trays, automatic duplex unit		
Input capacity, maximum	600 sheets					
Output capacity, standard	250 sheets					
Sizes	Letter, legal, executive, ledger, envelopes (Monarch, Com 10), custom; tray one: custom sizes, 3 x 5 to 12.3 x 18.5 in; trays two, three and four: 5 x 8 to 11 x 17 in					
Weights	Tray 1: 16 to 53 lb; Tray 2, 3, 4: 16 to 32 lb					
Types	Paper (plain, glossy, film, recycled), envelopes, transparencies, labels, cardstock and tough paper					
Media handling	100-sheet multipurpose tray, 500-sheet tray 2		100-sheet multipurpose tray, 500-sheet tray 2, 500-sheet tray 3	100-sheet multipurpose tray, 500-sheet tray 2, 500-sheet tray 3, 500-sheet tray 4		
Print technology resolution	600 dpi resolution, HP ImageREt 2400					
Connectivity	Interfaces					
	IEEE1284-compliant bidirectional parallel port, Fast Infrared (FIR) port, 3 open EIO slots	IEEE1284-compliant bidirectional parallel port, Fast Infrared (FIR) port, HP Jetdirect 615n print server in EIO slot, 2 open EIO slots		IEEE1284-compliant bidirectional parallel port, Fast Infrared (FIR) port, HP Jetdirect 615n print server in EIO slot, hard disk drive in EIO slot, 1 open EIO slot		
Languages	HP PCL 6, HP PCL 5c, HP postscript 3 emulation					
Standard operating systems	Microsoft® Windows® 95, 98, NT® 4.0, 2000, Me, XP, Mac OS 8.6 and later, OS2					
Minimum system requirements	Microsoft® Windows 95 (basic functions only) and 98: Pentium® 90 with 16 MB of RAM, Windows Me: Pentium 150 with 32 MB of RAM, Windows NT 4.0: Pentium 90 with 32 MB of RAM, Windows 2000: 300 MHz Processor with 64 MB of RAM, Windows XP: 233 MHz Processor with 64 MB of RAM, 180 MB free hard disk space for Windows; 160 MB for Mac, Mac OS 8.6, 9.0, 9.04, 9.1, 9.2, 10.1, CD-ROM drive or Internet connection, dedicated IEEE 1284 parallel port					
Dimensions (w x d x h)	22.7 x 27.7 x 25.2 in					
Weight	132 lb		236 lb	269 lb		
What's in the box	HP Color LaserJet 5500 printer, four HP LaserJet print cartridges (1 each: black, cyan, magenta, yellow), software and User's Guide and CD ROM, Getting Started Guide, power cord	HP Color LaserJet 5500n printer, four HP LaserJet print cartridges (1 each: black, cyan, magenta, yellow), software and User's Guide and CD ROM, Getting Started Guide, power cord, HP Jetdirect 10/100Base-T internal print server, one 500-sheet input tray	HP Color LaserJet 5500dn printer, four HP LaserJet print cartridges (1 each: black, cyan, magenta, yellow), software and User's Guide and CD ROM, Getting Started Guide, power cord, HP Jetdirect 10/100Base-T internal print server, automatic duplex unit, one 500-sheet input tray	HP Color LaserJet 5500dtn printer, four HP LaserJet print cartridges (1 each: black, cyan, magenta, yellow), software and User's Guide and CD ROM, Getting Started Guide, power cord, HP Jetdirect 10/100Base-T internal print server, automatic duplex unit, two 500-sheet input trays, stand	HP Color LaserJet 5500hdn printer, four HP LaserJet print cartridges (1 each: black, cyan, magenta, yellow), software and User's Guide and CD ROM, Getting Started Guide, power cord, HP Jetdirect 10/100Base-T internal print server, automatic duplex unit, three 500-sheet input trays, stand, hard disk	

³ Exact speed varies depending on the system configuration, software application, driver and document complexity.

Network compatibility

(Via HP Jetdirect print servers) Microsoft Windows 95, 98, NT, 4.0, 2000 XP, XP 64-bit, Novell NetWare 3.2, 4.2, 5.x, 6, Red Hat Linux 6.x, and later, SuSE Linux 6.x, and later, HP-UX 10.20, 11.x, Solaris 2.5x, 2.6, 7, 8, (SPARC systems only), IBM AIX 3.2.5 and later, MPE-iX, Mac OS 8.6 and later

Font capabilities

80 TrueType internal scalable in PCL, 80 TrueType internal scalable in PS

Environmental ranges

Operating temperature: 50 to 81° F (15 to 27° C)
Storage temperature: 32 to 95° F (0 to 35° C)
Operating humidity: 10 to 70% RH
Storage humidity: 10 to 95% RH

Acoustics

Noise level per ISO 9296
Sound power: LWAd 50 dB(A) Powersave, 65 dB(A) printing
Sound pressure: Operating position per ISO 7779: LpAm 49 dB(A) printing, 33 dB(A) standby

Power requirements

Source: Input voltage 100 to 127 VAC (-10%/+6%) 50/60 Hz (±2 Hz)

Power consumption

Printing: Minimum 556, maximum 592
Standby: Minimum 48.5, maximum 54.3
Powersave: 0.15

ENERGY STAR® compliant

Warranty

One-year onsite

Ordering information

Product number	HP product
C9656A	HP Color LaserJet 5500 printer
C7131A	HP Color LaserJet 5500n printer
C9657A	HP Color LaserJet 5500dn printer
C9658A	HP Color LaserJet 5500dtn printer
C9659A	HP Color LaserJet 5500hdn printer
Service and support	
H5549E	HP Care Pack, 3-year, next business day, onsite
H2691E	HP Care Pack, 3-year, same day, onsite four hour response
H4515E	HP Care Pack, installation service
H2872E	HP Care Pack, network installation service
Accessories	
C7130A	500-sheet input tray
C9669B	Printer stand
J6054B	HP High capacity hard disk
C9734A	Image transfer kit, 120K page life*
C9735A	Image luser kit, 110v, 150K page life*
C9736A	Image luser kit, 220v, 150K page life*
Supplies	
Print cartridges	
C9730A	HP Color LaserJet Smart print cartridge, black, 13K pages ³
C9731A	HP Color LaserJet Smart print cartridge, cyan, 12K pages ³
C9732A	HP Color LaserJet Smart print cartridge, yellow, 12K pages ³
C9733A	HP Color LaserJet Smart print cartridge, magenta, 12K pages ³
Media	
C4179A	HP Soft Gloss Laser Paper, 200 sheets, 32 lb, letter
Q2415A	HP Soft Gloss Laser Paper, 500 sheets, 28 lb, letter
Q2416A	HP Soft Gloss Laser Paper, 500 sheets, 28 lb, 11 x 17 inch
Q2419A	HP High Gloss Laser Paper, 200 sheets, 32 lb, letter
Q2420A	HP High Gloss Laser Paper, 200 sheets, 32 lb, 11 x 17 inch
Q1298A	HP LaserJet Tough Paper, 50 sheets, letter
HPJ1120	HP Premium Choice LaserJet Paper, 500 sheets, 32 lb, letter
HPJ115R	HP Premium Choice LaserJet Paper, 250 sheets, 11 x 17 inch
Q2413A	HP Premium Cover Paper, 100 sheets, 75 lb, letter
C2934A	HP Color LaserJet Transparencies, 50 sheets, letter
HPJ1124	HP LaserJet Paper, 500 sheets, 24 lb, letter
HPJ1424	HP LaserJet Paper, 500 sheets, 24 lb, legal
HPJ1724	HP LaserJet Paper, 500 sheets, 24 lb, 11 x 17 inch
HPJ245R	HP Color Laser Paper, 500 sheets, 24 lb, letter
HPJ247	HP Color Laser Paper, 500 sheets, 24 lb, 11 x 17 inch
HPJ285R	HP Color Laser Paper, 500 sheets, 28 lb, letter
HPJ113H	HP LaserJet Paper, 3-hole, 500 sheets, 24 lb, letter
Memory	
C7848A	64 MB SDRAM DIMM
C7850A	128 MB SDRAM DIMM
C9653A	256 MB SDRAM DIMM
Interface and cables	
C2946A	Parallel cable, 3-meter IEEE 1284 cable with C type connector
922155	Macintosh DIN-8 printer cable
92213N	HP LocalTalk cable kit
C4103A	HP Fast Infrared receiver
Connectivity	
J6058A	HP Jetdirect 680n 802.11b wireless internal print server
J7934A	HP Jetdirect 620n Fast Ethernet (10/100Base-TX, 802.3)
J6057A	HP Jetdirect 615n Fast Ethernet (10/100Base-TX) internal print server
J4167A	HP Jetdirect 610 Token Ring print server
J4135A	HP Jetdirect connectivity card for USB, Serial and LocalTalk connections

*Estimated life will depend on job parameters, i.e., coverage, type and length.
³Based on 5% average page coverage



HP recommends Microsoft® Windows® XP Professional for mobile computing.

ENERGY STAR and the ENERGY STAR logo are U.S. registered marks of the United States Environmental Protection Agency. Microsoft, Windows and Windows NT are U.S. registered trademarks of Microsoft Corporation.

© 2003, 2004 Hewlett-Packard Development Company, L.P. The information contained herein is subject to change without notice. The only warranties for HP products and services are set forth in the express warranty statements accompanying such products and services. Nothing herein should be construed as constituting an additional warranty. HP shall not be liable for technical or editorial errors or omissions contained herein.

For more information visit our website at www.hp.com

5981-1007ENUC, 4/26/2004

